

# Desktop Projector™ 9200

XGA that's light and bright

## XGA MARKS THE SPOT

1024 x 768 resolution with SXGA scaling offers wide PC, Mac and workstation compatibility

## SMART ENOUGH TO SHARE

two computer and two video inputs accommodate multiple presenters

## BRIGHTEST IN ITS CLASS

at 500 ANSI lumens, no other XGA projector is brighter

## LIGHTWEIGHT CHAMPION

just 14 pounds and a compact design make it a handy traveling companion

## ZOOM IN, ZOOM OUT

motorized 1.6:1 zoom and focus give the ultimate in projection flexibility



actual size: 10.8 in. W x 15.6 in. L x 6.5 in. H

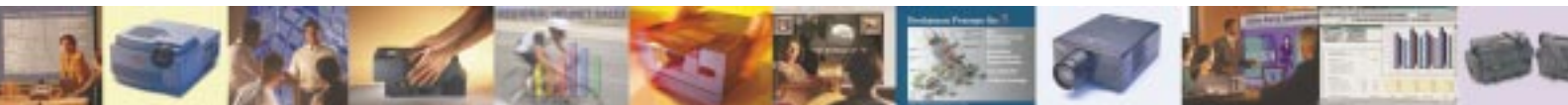
## A WINNING IMAGE

"auto image" feature automatically calibrates the picture

## DESKTOP PROJECTOR 9200 KEY BENEFITS

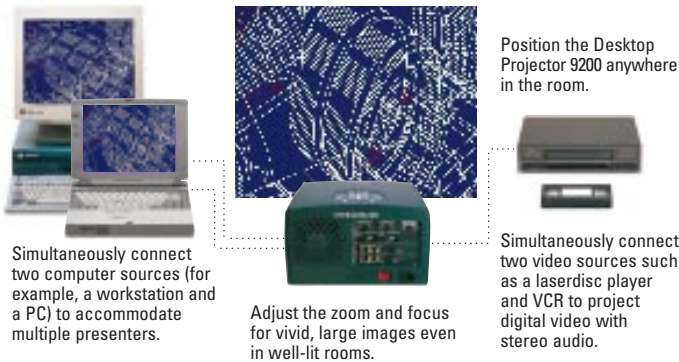
- true XGA resolution for an amazing image
- SXGA to VGA compatibility supports the widest range of platforms
- bright enough to use virtually anywhere—even with the lights on
- delightfully portable at just 14 pounds
- motorized 1.6:1 precision Canon lens offers the widest range of zoom settings
- fits easily in the overhead or under the seat on an airplane
- extra long-lasting metal halide lamp keeps maintenance costs down

**PROXIMA®**  
MULTIMEDIA PROJECTORS



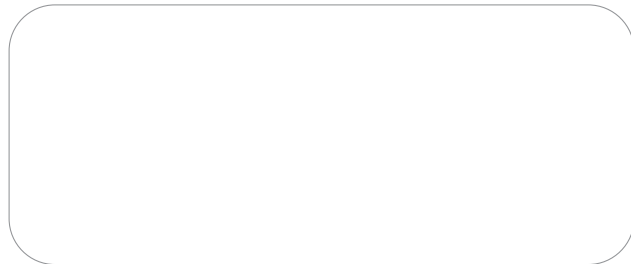
# DP9200

## DP9200 Set Up



## DP9200 Projection Distances/Image Sizes

Projection Distance		Image Size (Diagonal)			
		Minimum		Maximum	
3.3'	1.0 m	1.7'	0.5 m	2.7'	0.8 m
6.9'	2.1 m	3.1'	0.9 m	5.0'	1.5 m
12.0'	3.6 m	5.2'	1.6 m	8.3'	2.5 m
17.7'	5.4 m	7.8'	2.4 m	12.5'	3.8 m
23.6'	7.2 m	10.4'	3.2 m	16.6'	5.1 m
35.1'	10.7 m	15.7'	4.8 m	25.0'	7.6 m
46.9'	14.3 m	20.8'	6.3 m	33.3'	10.1 m
92.0'	28.0 m	33.3'	10.1 m	53.3'	16.2 m



**PROXIMA®**  
MULTIMEDIA PROJECTORS

**Main Office:** 9440 Carroll Park Drive, San Diego, CA 92121-2298,  
(619) 457-5500, FAX (619) 457-9647, (800) 447-7692 (U.S. and Canada)

**Latin American Office:** 3191 Coral Way, Suite 636, Miami, FL,  
33145-3213, (305) 445-6445, FAX (305) 445-6435

**European Office:** St. Thomas House, 28-32 Spittal Street, Marlow, Bucks.  
SL7 1DB. U.K., +44 (0) 1628 481555, FAX +44 (0) 1628 487744

[www.proxima.com](http://www.proxima.com)

[www.presentersuniversity.com](http://www.presentersuniversity.com)

1 Wireless speakers are not available in certain markets.  
2 The DP9200 is available with 1 video input in certain markets.

Proxima is a registered trademark of Proxima Corporation and Desktop Projector is a trademark of Proxima Corporation. Other trademarks are the property of their respective owners.  
©1997 Proxima Corporation. All rights reserved. Specifications are subject to change without notice. Lumen and lamp life may vary depending on lamp manufacturer.

12/97 709-00499-2

## WHAT'S INCLUDED

### Model DP9200 includes:

- Remote control
- U.S. and European power cords
- Product documentation
- Lens cap
- Computer video cable, computer mini-plug to mini-plug audio cable, Mac adapter, PC and Mac control cables, AV cable, S-Video cable
- Dust cover

## ORDERING INFORMATION

### Model Number

DP9200

For worldwide use

### Optional Accessories

<b>A298</b>	Desktop Projector rolling soft case
<b>A2301</b>	Desktop Projector rolling hard case
<b>contact your dealer</b>	Workstation connection kit(s)
<b>A58<sup>1</sup></b>	AC/DC wireless boardroom speaker system
<b>A59<sup>1</sup></b>	AC/DC wireless portable speaker system

## TECHNICAL SPECIFICATIONS

<b>Computer Compatibility</b>	<ul style="list-style-type: none"> <li>▪ SUN, SGI, IBM, HP, DEC, and X-Terminals graphics mode up to 135MHz</li> <li>▪ IBM PC, PS/2, Pentium and Compatibles</li> <li>▪ Apple Macintosh, Power Macintosh, and PowerBook families</li> </ul>
<b>Video Compatibility</b>	<ul style="list-style-type: none"> <li>▪ NTSC, NTSC 4.43, PAL (N and M), SECAM</li> </ul>
<b>Sources</b>	<ul style="list-style-type: none"> <li>▪ 2 computer</li> <li>▪ 2 video<sup>2</sup></li> <li>▪ 1 S-video</li> </ul>
<b>H-Sync Range</b>	<ul style="list-style-type: none"> <li>▪ 15 to 81 KHz</li> </ul>
<b>V-Sync Range</b>	<ul style="list-style-type: none"> <li>▪ 50 to 100 Hz</li> </ul>
<b>Brightness</b>	<ul style="list-style-type: none"> <li>▪ 500 ANSI lumens (typical)</li> </ul>
<b>Contrast Ratio</b>	<ul style="list-style-type: none"> <li>▪ 100:1 minimum (ANSI)</li> </ul>
<b>Display Technology</b>	<ul style="list-style-type: none"> <li>▪ 1.3 in. polysilicon active-matrix TFT (Thin Film Transistor) x 3</li> </ul>
<b>Resolution</b>	<ul style="list-style-type: none"> <li>▪ XGA (1024 x 768)</li> </ul>
<b>Resolutions Supported</b>	<ul style="list-style-type: none"> <li>▪ VGA (640 x 480), SVGA (800 x 600), XGA (1024 x 768), SXGA (1280 x 1024, scaled)</li> </ul>
<b>Keystone Correction</b>	<ul style="list-style-type: none"> <li>▪ 7°</li> </ul>
<b>Number of Colors</b>	<ul style="list-style-type: none"> <li>▪ 16.7 million</li> </ul>
<b>Image Size (Diagonal)</b>	<ul style="list-style-type: none"> <li>▪ 1.7 ft (0.5 m) to 53.3 ft (16.2 m)</li> </ul>
<b>Lens</b>	<ul style="list-style-type: none"> <li>▪ Motorized zoom lens 1.6:1 ratio</li> <li>▪ Focal length: 47mm to 75mm, f/2.5 to f/3.2</li> </ul>
<b>Projection Distance (From Screen)</b>	<ul style="list-style-type: none"> <li>▪ 3.3 ft (1.0 m) to 92 ft (28.0 m)</li> </ul>
<b>Lamp</b>	<ul style="list-style-type: none"> <li>▪ 120 watt UHP metal halide</li> <li>▪ Lamp life: 2,000 hours to 50% brightness</li> </ul>
<b>Audio</b>	<ul style="list-style-type: none"> <li>▪ Two 2-watt stereo speakers with 2-watt stereo speaker output jack (mini-jack)</li> </ul>
<b>Remote Control</b>	<ul style="list-style-type: none"> <li>▪ Includes zoom and focus control, and computer mouse control</li> </ul>
<b>Approvals</b>	<ul style="list-style-type: none"> <li>▪ FCC Class A, CE, UL</li> </ul>
<b>Power Consumption</b>	<ul style="list-style-type: none"> <li>▪ 200 watts</li> </ul>
<b>Power Requirements</b>	<ul style="list-style-type: none"> <li>▪ Auto switching 90 to 264 VAC, 50/60 Hz</li> </ul>
<b>Operating Temperature (Sea Level)</b>	<ul style="list-style-type: none"> <li>▪ 40° F (5° C) to 95° F (35° C)</li> </ul>
<b>Weight</b>	<ul style="list-style-type: none"> <li>▪ 14.1 lb (6.4 kg)</li> </ul>
<b>Dimensions</b>	<ul style="list-style-type: none"> <li>▪ 10.8 in. (W) x 15.6 in. (L) x 6.5 in. (H) 27.5 cm (W) x 39.5 cm (L) x 16.6 cm (H)</li> </ul>
<b>Warranty</b>	<ul style="list-style-type: none"> <li>▪ One year on parts and labor (excluding lamp)</li> </ul>

