

KEMLUX® II KS SERIES

ENCLOSED & GASKETED

Cat. #		Approvals
Job	Type	



APPLICATIONS

- For use in corrosive, wet and dirty industrial applications such as power generation, waste water and sewage treatment, pulp/paper or steel mills.

SPECIFICATIONS

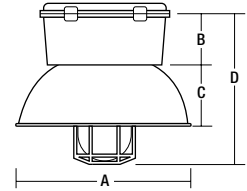
- Cover selection of rigid and flexible pendant, ceiling, wall and 25° stanchion of varying threaded NPT entries.
- Minimum starting temp of -20°F for PSMH and -40°F for HPS.
- Copper-free (<0.4%) aluminum housing, cover and guard with Lektrocote® powder polyester paint finish provides excellent corrosion resistance from most chemicals.
- Optic choices of impact resistance glass globe, symmetric/asymmetric glass refractors, dome/angle fiberglass reinforced polyester reflector, 19" enclosed reflector, and polycarbonate enclosed lowbay.
- Modular design permits selection of cover, body, globe, guard and reflector for custom applications.

LISTINGS

- UL1598 Wet Locations; NEMA 4X with K-G globe, 55°C ambient listed



medium housing



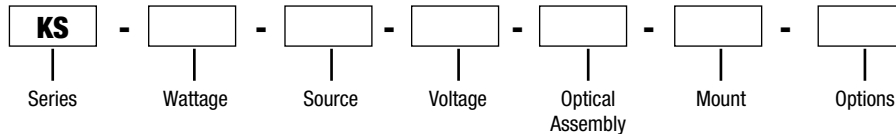
GLOBE (K-G), GUARD (K-10), DOME (K-06)

A	B	C	D
16 ³ / ₈ "	4 ³ / ₄ "	5 ⁵ / ₈ "	14 ¹ / ₂ "
416mm	121mm	143mm	368mm

MORE DIMENSIONS INSIDE

ORDERING INFORMATION

ORDERING EXAMPLE: KS-15-P-8-G-P2-F4



SERIES

KS Kemplux® II

S High Pressure Sodium (HPS)

P Pulse Start

MEDIUM HOUSING

G Globe

MEDIUM OR LARGE HOUSING

L Symmetrical Glass Refractor

LARGE HOUSING

M Asymmetrical Glass Refractor

E Enclosed Reflector

MOUNT

B2 ¾" Balancing Pendant

C2 ¾" Ceiling

D4 1¼" Stanchion

D5 1½" Stanchion

P2 ¾" Pendant

W2 ¾" Wall

F(X) Fusing^{1,2} (X indicates voltage)

QS Quartz Standby (restart time MH=5 min.; HPS=1min.)

QT Time Delay Quartz Standby

FA Factory Assembled - lamp ordered separately globe installed onto housing; includes mounting adapter and/or guard (medium housing only); reflector shipped separately³

WATTAGE

MEDIUM HOUSING

70 70 watt HPS, Pulse Start

LARGE HOUSING

40 400 watt HPS, Pulse Start

VOLTAGE

5 480V (not available for

50 watt HPS)

8 Quad-Tap® (120, 208, 240, 277V)

E 220/240V 50Hz

¹ To specify voltage, replace X with 1-120V, 2-208V, 3-240V, 4-277V, 5-480V, F-347V.

² Not offered with CSA listing.

³ Lamp ordered separately

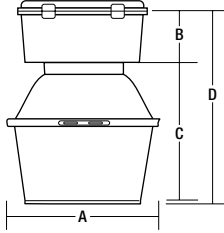
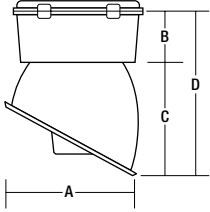
SOURCE

OPTICAL ASSEMBLY

OPTIONS

DIMENSIONS

medium housing



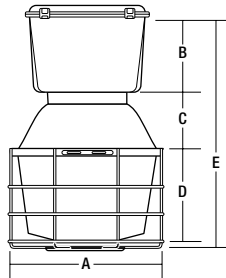
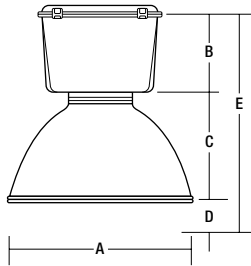
GLOBE (K-G), ANGLE DOME (K-07)

	A	B	C
D	11 ¹ / ₄ "	4 ³ / ₄ "	10 ¹ / ₄ "
	15"		

REFLECTOR/GLASS REFRACTOR (K-L)

	A	B	C
D	12 ¹ / ₄ "	4 ³ / ₄ "	13 ⁵ / ₁₆ "
	18 ⁷ / ₁₆ "		

large housing



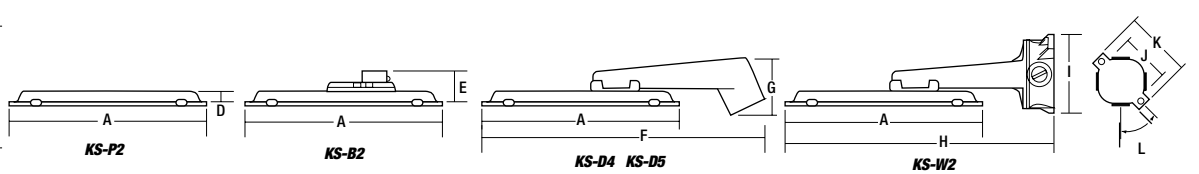
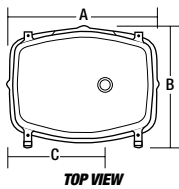
REFLECTOR/GLASS LENS (K-E)

	A	B	C	D	E
	19"	6 ¹ / ₁₆ "	12 ⁵ / ₈ "	3 ¹ / ₂ "	22 ¹ / ₄ "
	483 mm	154 mm	321 mm	89 mm	565 mm

REFRACTOR (K-L, K-M), GUARD (K-20)

	A	B	C	D	E
	13 ¹ / ₄ "	6 ¹ / ₁₆ "	5 ³ / ₄ "	7 ⁹ / ₁₆ "	19 ³ / ₄ "
	337 mm	154 mm	146 mm	192 mm	502 mm

mounting adapters



	A	B	C	D	E	F	G	H	I	J	K	L
	12 ¹ / ₄ "	10"	7 ¹ / ₁₆ "	7/8"	2 ³ / ₁₆ "	17 ¹ / ₈ "	3 ¹ / ₂ "	16 ¹ / ₂ "	4 ⁷ / ₈ "	5"	5 ⁵ / ₈ "	45°
	311 mm	254 mm	179 mm	22 mm	56 mm	435 mm	89 mm	419 mm	113 mm	127 mm	143 mm	-

ORDERING INFORMATION

ACCESSORIES

(order as separate part #)

Catalog Number	Description	Weight	
		lbs.	kg
K-10	Cast Guard for K-G globe	1.0	0.5
K-20	Steel Wire Guard for K-L and K-M glass refractors (zinc plated)	2.0	0.9
K-06	Standard Dome Reflector for K-G globe (FRP)	1.0	0.5
K-07	30° Angle Reflector for K-G globe (FRP)	1.0	0.5

COMPONENT ORDERING INFORMATION

KS SERIES MOUNTING ADAPTERS The following mounting adapters are available for the KS Series. Order separately or refer to Catalog Logic for complete fixture.

Catalog Number	Description	Hubs		Plugs Qty	Weight	
		Size	Qty		lbs.	kg
KS-P2	Pendant	3/4"	1	—	1.5	0.7
KS-C2	Ceiling (also for Electro-Reg®)	3/4"	4	3	2.0	0.9
KS-D4	25° Stanchion	1 1/4"	1	—	4.0	1.8
KS-D5	25° Stanchion	1 1/2"	1	—	4.0	1.8
KS-W2	Wall	3/4"	4	3	4.0	1.8
KS-B2	Balancing Pendant	3/4"	1	—	2.0	0.9

COMPONENT ORDERING INFORMATION

KS SERIES BALLAST HOUSING

Wattage	Voltage	Catalog Number		
		HPS	Mercury Vapor	Metal Halide
70W	120/208/240/277	KS70S8	—	KS70H8
	480	KS70S5	—	KS70H5
150W	120/208/240/277	KS15S8	—	—
	480	KS15S5	—	—
400W	120/208/240/277	KS40S8	—	KS40P8
	480	KS40S5	—	KS40P5

KS SERIES OPTICS

Catalog Number	Description	Weight	
		lbs.	kg
K-G	Prismatic, heat-resistant Glass Globe (medium housing only)	2	0.9
K-E	19" Enclosed Reflector	7	3.2
K-L	Symmetrical (Type V) Glass Refractor	13	5.9
K-M	Asymmetrical (Type II) Glass Refractor	13	5.9