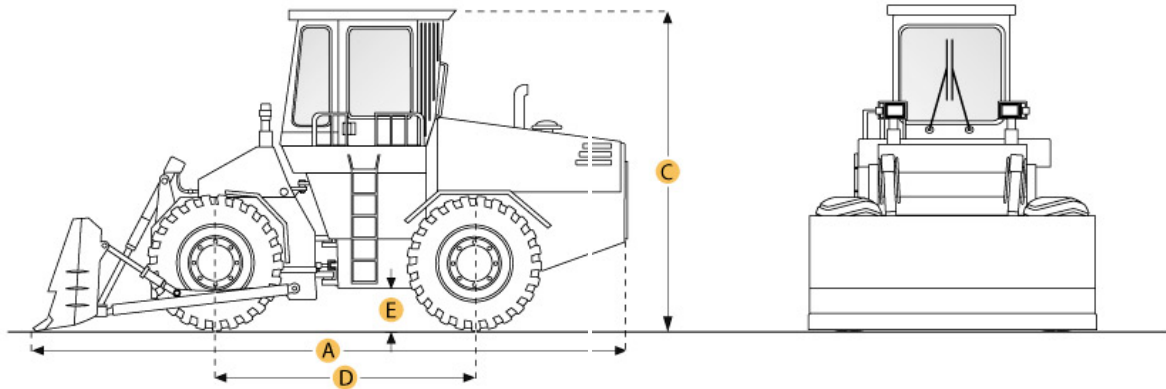


Komatsu WD600-3 Wheel Dozer



Selected Dimensions

Dimensions

A. LENGTH WITH BLADE ON GROUND	30.5 ft in	9285 mm
B. WIDTH OVER TIRES	11.8 ft in	3570 mm
C. HEIGHT TO TOP OF CAB	13.9 ft in	4250 mm
D. WHEELBASE	13.4 ft in	4100 mm
E. GROUND CLEARANCE	1.6 ft in	495 mm

Specification

Engine

MAKE	Komatsu	
MODEL	SAA6D170E-3	
GROSS POWER	522 hp	389 kw
NET POWER	485 hp	362 kw
DISPLACEMENT	1413 cu in	23.2 L
ASPIRATION	air-to-air aftercooled, turbocharged	

Operational

FUEL CAPACITY	177 gal	670 L
COOLING SYSTEM FLUID CAPACITY	42.3 gal	160 L
ENGINE OIL CAPACITY	12.4 gal	47 L
HYDRAULIC SYSTEM FLUID CAPACITY	56.8 gal	215 L
FRONT DIFF FLUID CAPACITY	32.8 gal	124 L
REAR DIFF FLUID CAPACITY	32.8 gal	124 L
STEERING ANGLE	40 degrees	
OPERATING VOLTAGE	24 V	
ALTERNATOR SUPPLIED AMPERAGE	75 amps	

Transmission

TYPE	full-powershift, planetary gear type	
NUMBER OF FORWARD GEARS	4	
NUMBER OF REVERSE GEARS	4	
MAX SPEED - FORWARD	22.5 mph	36.2 km/h
MAX SPEED - REVERSE	24.9 mph	40 km/h

Blade

BLADE CAPACITY	10.5 yd ³	8 m ³
BLADE WIDTH	16.8 ft in	5100 mm
BLADE HEIGHT	4.7 ft in	1430 mm

Dimensions

LENGTH WITH BLADE ON GROUND	30.5 ft in	9285 mm
WIDTH OVER TIRES	11.8 ft in	3570 mm
HEIGHT TO TOP OF CAB	13.9 ft in	4250 mm
WHEELBASE	13.4 ft in	4100 mm
GROUND CLEARANCE	1.6 ft in	495 mm

