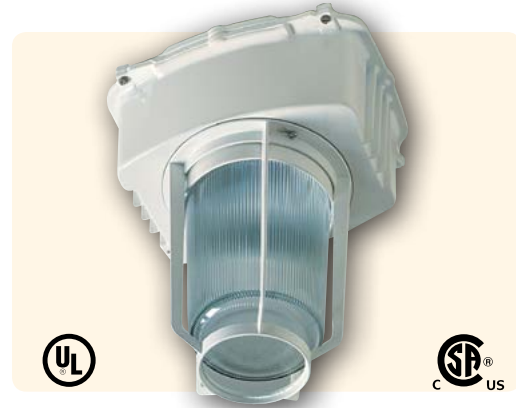


KS Series

Kemlux® II Enclosed/Gasketed

HAZARDOUS SEALED

- For use in corrosive, wet and dirty industrial applications such as power generation, waste water and sewage treatment, pulp/paper or steel mills
- Mogul base socket; Cover selection of rigid and flexible pendant, ceiling, wall and 25° stanchion in varying threaded NPT entries
- Minimum starting temperature of -20°F for PSMH and -40°F for HPS
- Copper-free (<0.4%) aluminum housing, cover and guard with white Lektrocote® powder polyester paint finish provides excellent corrosion resistance from most chemicals
- Optic choices of impact-resistant glass globe, symmetric/asymmetric glass refractors, dome/angle fiberglass reinforced polyester reflector, 19" enclosed reflector, and polycarbonate enclosed lowbay
- Modular design permits selection of cover, body, globe, guard and reflector for custom applications
- UL1598 Wet Locations; NEMA 4X with K-G globe, 55°C ambient listed



ORDERING INFORMATION

KS	-	[]	-	[]	-	[]	-	[]	-	[]
SERIES	SOURCE	VOLTAGE	MOUNT	OPTIONS						
KS Kemlux II Harsh/Severe	S HPS P PSMH	5 480V (not available for 50w HPS) 8 Quad Tap® (120, 208, 240, 277V) E 220/240V, 50 Hz	B2 3/4" Balancing Pendant C2 3/4" Ceiling D4 1 1/4" Stanchion D5 1 1/2" Stanchion P2 3/4" Pendant P3 1" Pendant W2 3/4" Wall	F(X) ^{1,2} Fusing (X indicates voltage) QS Quartz standby (restart time PSMH = 5 min; HPS - 1 min) QT Time delay quartz standby FA ³ Factory assembled - globe installed onto housing; includes mounting adapter and/or guard (medium housing only); reflector shipped separately						
WATTAGE										
MEDIUM HOUSING										
70 70w PSMH, HPS										
15 150w HPS										
LARGE HOUSING										
40 400w PSMH, HPS										
OPTICAL ASSEMBLY										
MEDIUM HOUSING										
G Globe										
MEDIUM OR LARGE HOUSING										
L Symmetrical glass refractor										
LARGE HOUSING										
M Asymmetrical glass refractor										
E Enclosed reflector										
¹ To specify voltage, replace X with 1-120V, 2-208V, 3-240V, 4-277V, 5-480V, F-347V ² Not offered with CSA listing ³ Lamp ordered separately										

ACCESSORIES - Order Separately

Catalog Number	Description	Weight lbs. (kg)
K-10	Cast Guard for K-G globe	1 (0.5)
K-20	Steel wire guard for K-L and K-M glass refractors (Zinc plated)	2 (0.9)
K-06	Standard dome reflector for K-G globe (FRP)	1 (0.5)
K-07	30° angle reflector for K-G globe (FRP)	1 (0.5)