

CEMA C  
CEMA D

# GOODMAN CONVEYOR

## C and D Series

GOODMAN  HEWITT

CONVEYORS & COMPONENTS

On August 1, 2009, Goodman Conveyor Company and Hewitt-Robins Conveyor Components were united to create a new kind of conveyor and component company—one dedicated to giving you what you want, when you want it. Call us and a real person will answer the phone and see that you get what you want.

800.388.7701

[www.goodman-hewitt.com](http://www.goodman-hewitt.com)

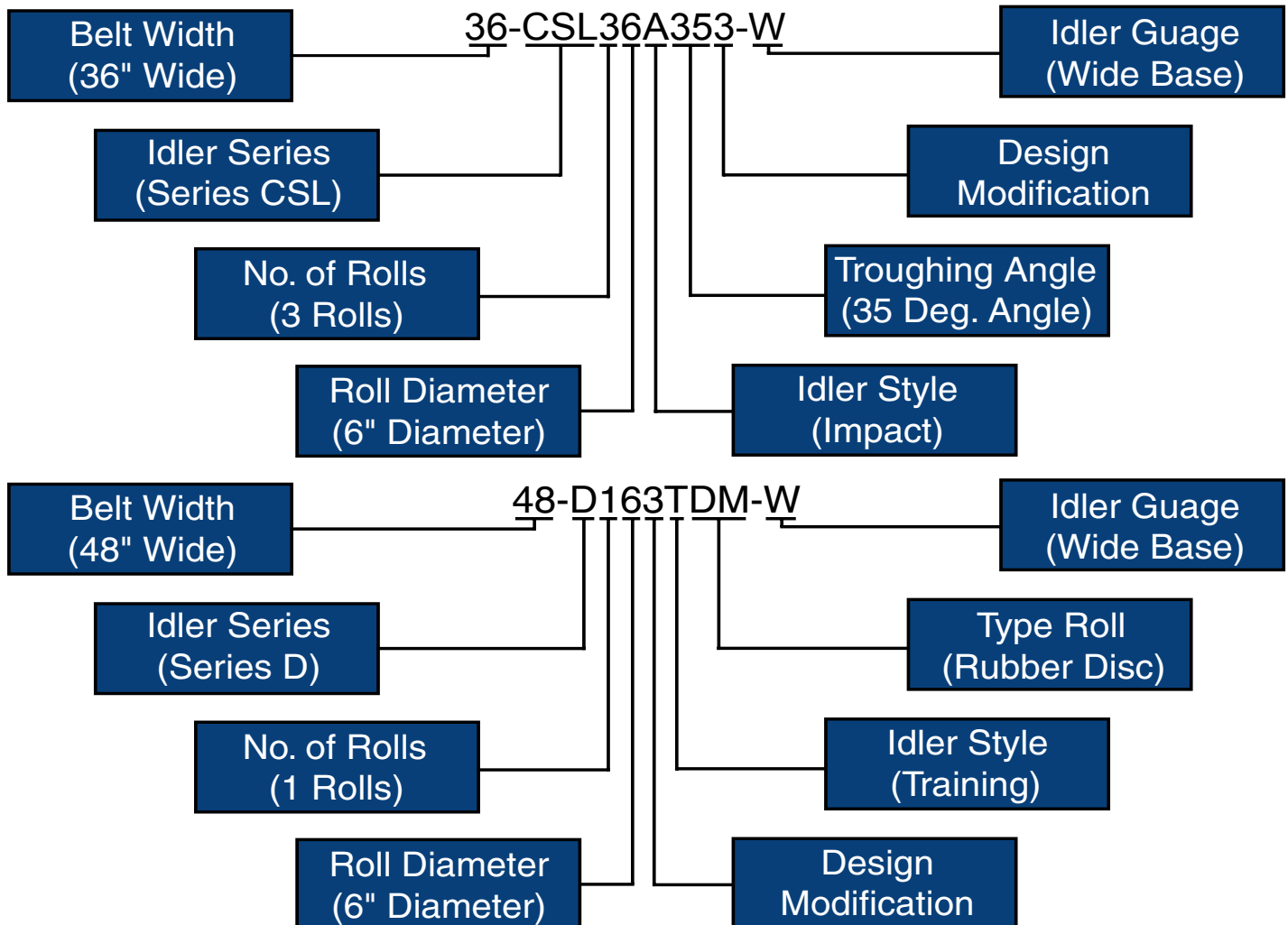
What You Want, When You Want It.™

With Jeffrey Permaseal III™ seal design

## Idler Specification Information

Goodman Series	CEMA Series	Roll Diameter	Type of Service
B	B	4 & 5 inch	Light Duty
CSL, CMF, CSLB	C	4, 5 & 6 inch	Medium Duty
D, DSL	D	5 & 6 inch	Medium to Heavy Duty
E, ESL	E	6 & 7 inch	Heavy Duty

## Idler Identification Guide (Examples)



### Abbreviations

#### Prefix (Series)

B, C, D and E-(see above)  
 SL-Sealed For Life  
 SLB-Sealed for Life Ball Bearing  
 X-Special Feature

#### Internal

A-Impact  
 T-Training  
 SQ-Scale Quality  
 SS-Scale Service

#### Suffix

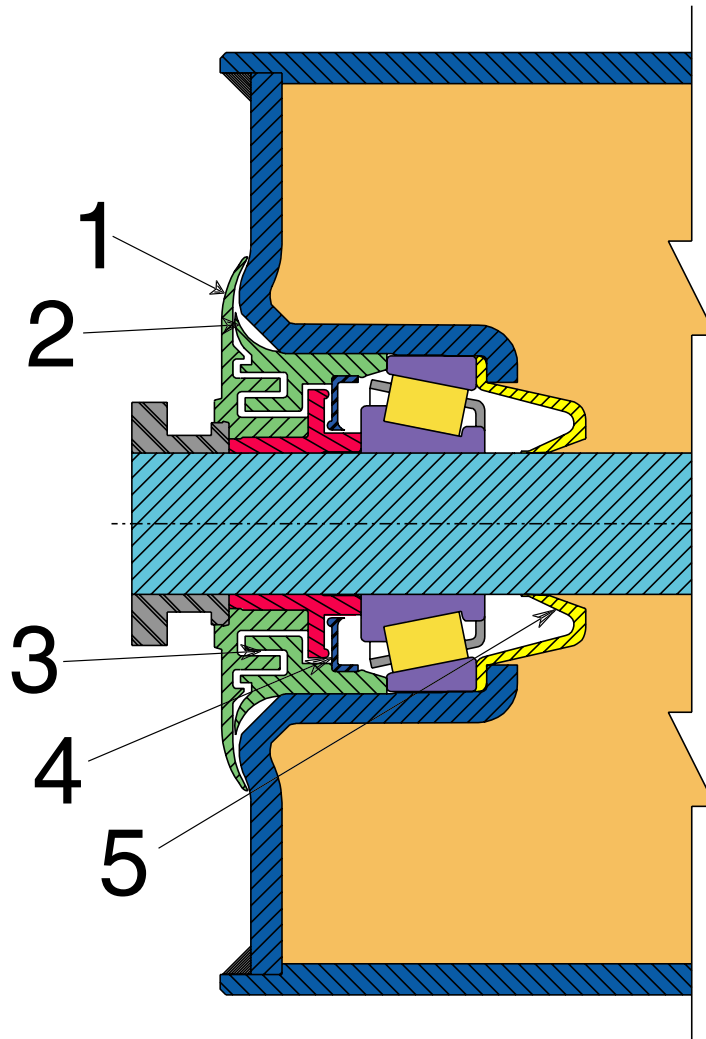
DM-Rubber Disc Massed End  
 E-Elastomer (Urethane)  
 L-Live Shaft  
 CDR-Catenary Quick Release

CC-Catenary Chain  
 CRK-Catenary Rod & Key  
 CEH-Catenary Eye Hook  
 W-Wide Base

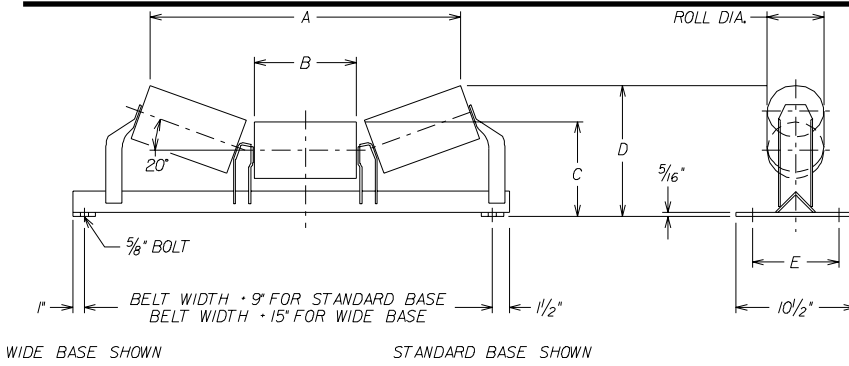
Note: Standard Base is furnished unless Wide Base (W) is specified.  
 4" Dia. rolls are also available, but not shown in this catalog.

## Jeffrey Permaseal III™ Roll Design Features

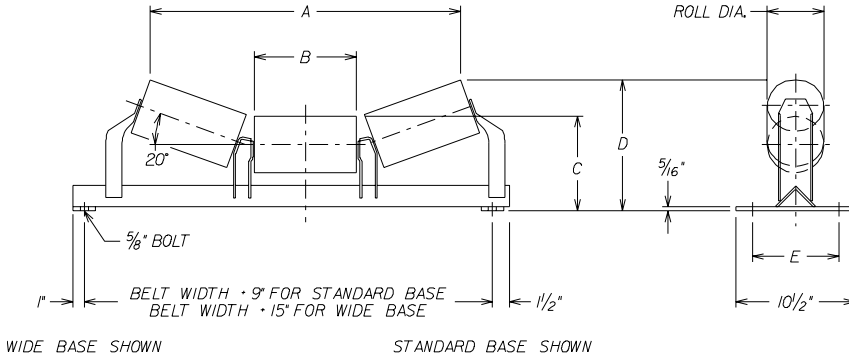
- 3/4" Tapered Roller Bearing
- 3/4" Solid Shaft
- Sealed For Life, Non-Purging Seal
- Counter Bored Roll Shell, Protected Weld



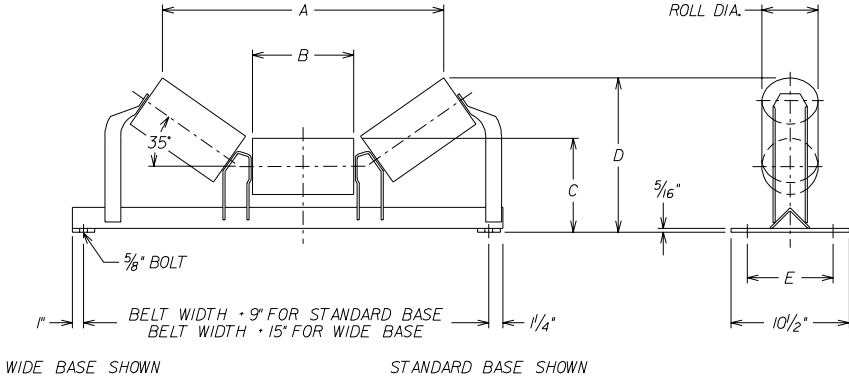
1. Exterior Shield
2. Flinger
3. Grease Filled, Multiple Path Labyrinth Seal
4. Contact Lip Seal
5. Rear Seal



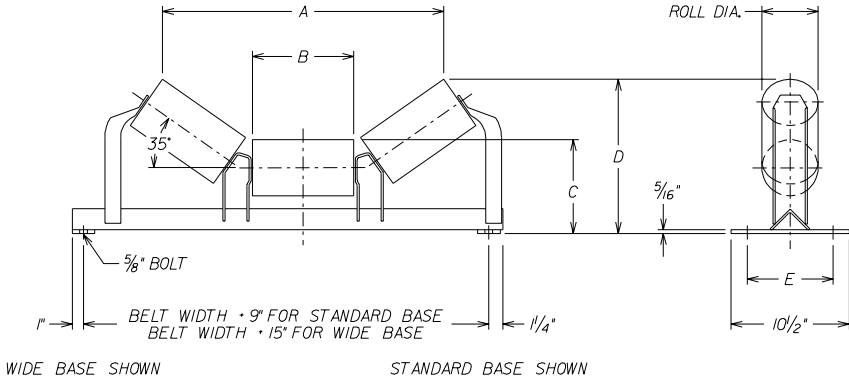
CSL35203 20 DEG 5 INCH TROUGHING							
Belt Width	Std. Base	Wide Base	A	B	C	D	E
	Wt.	Wt.					
18	44	-	21 1/4	6 7/8	8 3/8	10 13/16	6 1/4 - 9
24	50	55	27 3/8	9	8 3/8	11 9/16	6 1/4 - 9
30	58	60	33 5/16	11 1/16	8 11/16	12 5/8	6 1/4 - 9
36	66	67	39 1/4	13 1/8	8 11/16	13 5/16	6 1/4 - 9
42	78	80	45 3/8	15 1/4	8 11/16	14 1/16	6 1/4 - 9
48	90	92	51 1/4	17 5/16	9 1/16	15 1/8	7 - 9
54	100	103	57 1/4	19 3/8	9 1/16	15 7/8	7 - 9
60	109	111	63 5/16	21 1/2	9 1/16	16 9/16	7 - 9



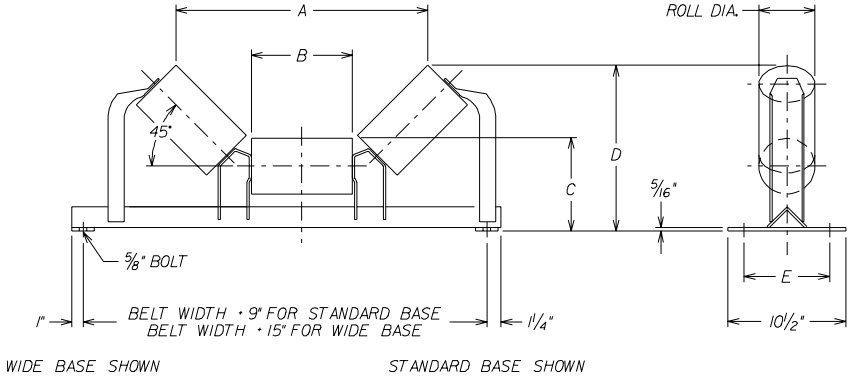
CSL36203 20 DEG 6 INCH TROUGHING							
Belt Width	Std. Base	Wide Base	A	B	C	D	E
	Wt.	Wt.					
18	51	-	20 7/8	6 7/8	8 7/8	11 1/4	6 1/4 - 9
24	59	63	27	9	8 7/8	12	6 1/4 - 9
30	69	70	32 15/16	11 1/16	9 3/16	13 1/16	6 1/4 - 9
36	77	78	38 7/8	13 1/8	9 3/16	13 13/16	6 1/4 - 9
42	90	93	45	15 1/4	9 3/16	14 1/2	6 1/4 - 9
48	104	106	50 15/16	17 5/16	9 9/16	15 5/8	7 - 9
54	116	118	56 7/8	19 3/8	9 9/16	16 5/16	7 - 9
60	125	128	63	21 1/2	9 9/16	17 1/16	7 - 9



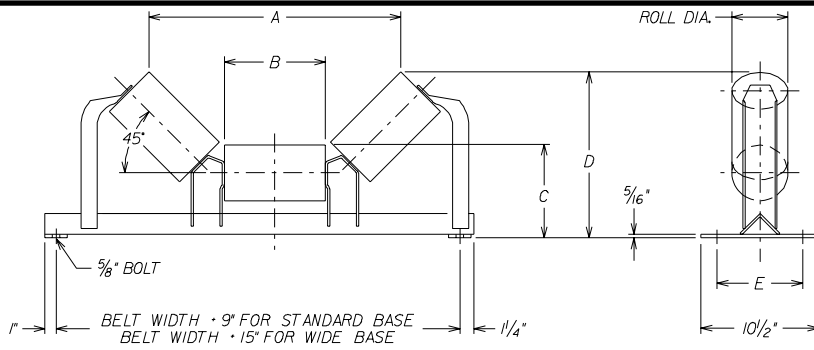
CSL35353 35 DEG 5 INCH TROUGHING							
Belt Width	Std. Base	Wide Base	A	B	C	D	E
	Wt.	Wt.					
18	45	-	19 3/8	6 7/8	8 3/8	12 1/2	6 1/4 - 9
24	51	57	25	9	8 3/8	13 11/16	6 1/4 - 9
30	60	62	30 7/16	11 1/16	8 11/16	15 1/4	6 1/4 - 9
36	68	70	35 13/16	13 1/8	8 11/16	16 7/16	6 1/4 - 9
42	81	83	41 1/2	15 1/4	8 11/16	17 5/8	6 1/4 - 9
48	93	95	46 15/16	17 5/16	9 1/16	19 3/16	7 - 9
54	106	108	52 5/16	19 3/8	9 1/16	20 3/8	7 - 9
60	115	118	57 15/16	21 1/2	9 1/16	21 5/8	7 - 9



CSL36353 35 DEG 6 INCH TROUGHING							
Belt Width	Std. Base	Wide Base	A	B	C	D	E
	Wt.	Wt.					
18	52	-	18 3/4	6 7/8	8 7/8	12 7/8	6 1/4 - 9
24	59	65	24 3/8	9	8 7/8	14 1/8	6 1/4 - 9
30	71	73	29 13/16	11 1/16	9 3/16	15 5/8	6 1/4 - 9
36	79	81	35 1/4	13 1/8	9 3/16	16 11/16	6 1/4 - 9
42	93	95	40 7/8	15 1/4	9 3/16	18 1/16	6 1/4 - 9
48	107	109	46 5/16	17 5/16	9 9/16	19 5/8	7 - 9
54	121	124	51 3/4	19 3/8	9 9/16	20 13/16	7 - 9
60	132	134	57 3/8	21 1/2	9 9/16	22	7 - 9



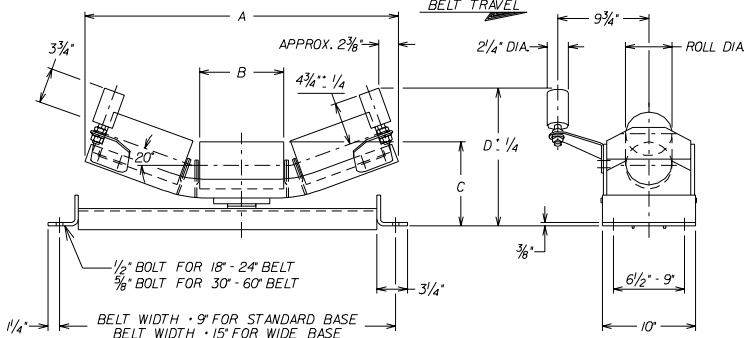
CSL35453 45 DEG 5 INCH TROUGHING							
Belt Width	Std. Base	Wide Base	A	B	C	D	E
	Wt.	Wt.					
18	49	-	17 11/16	6 7/8	8 3/8	13 7/16	6 1/4 - 9
24	56	61	22 13/16	9	8 3/8	14 15/16	6 1/4 - 9
30	67	68	27 3/4	11 1/16	8 11/16	16 3/4	6 1/4 - 9
36	75	76	32 3/4	13 1/8	8 11/16	18 3/16	6 1/4 - 9
42	88	90	37 7/8	15 1/4	8 11/16	19 11/16	6 1/4 - 9
48	101	104	42 7/8	17 5/16	9 1/16	21 9/16	7 - 9
54	110	113	47 13/16	19 3/8	9 1/16	23 1/16	7 - 9
60	120	123	53	21 1/2	9 1/16	24 1/2	7 - 9



CSL36453 45 DEG 6 INCH TROUGHING							
Belt Width	Std. Base	Wide Base	A	B	C	D	E
	Wt.	Wt.					
18	56	-	17 1/16	6 7/8	8 7/8	13 11/16	6 1/4 - 9
24	65	70	22 3/16	9	8 7/8	15 5/16	6 1/4 - 9
30	77	78	27 3/16	11 1/16	9 3/16	17 1/8	6 1/4 - 9
36	86	87	32 1/8	13 1/8	9 3/16	18 9/16	6 1/4 - 9
42	101	103	37 1/4	15 1/4	9 3/16	20 1/16	6 1/4 - 9
48	115	118	42 1/4	17 5/16	9 9/16	21 15/16	7 - 9
54	126	129	47 1/4	19 3/8	9 9/16	23 3/8	7 - 9
60	137	140	52 3/8	21 1/2	9 9/16	24 7/8	7 - 9

WIDE BASE SHOWN

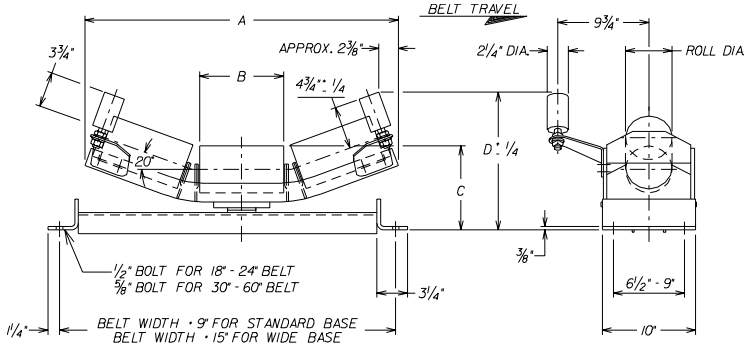
STANDARD BASE SHOWN



CSL35T203 20 DEG 5 INCH TROUGHING/TRAINING						
Belt Width	Std. Base	Wide Base	A	B	C	D
	Wt.	Wt.				
18	84	87	27 7/8	6 7/8	9	13 15/16
24	94	103	33 5/8	9	9	14 5/8
30	109	112	39 3/8	11 1/16	9 3/8	15 3/4
36	123	126	45 1/8	13 1/8	9 3/8	16 7/16
42	133	139	50 7/8	15 1/4	9 3/8	17 3/16
48	146	150	56 5/8	17 5/16	9 3/4	18 1/4
54	163	166	62 7/8	19 3/8	9 3/4	19 1/8
60	175	178	68 5/8	21 1/2	9 3/4	19 7/8

WIDE BASE SHOWN

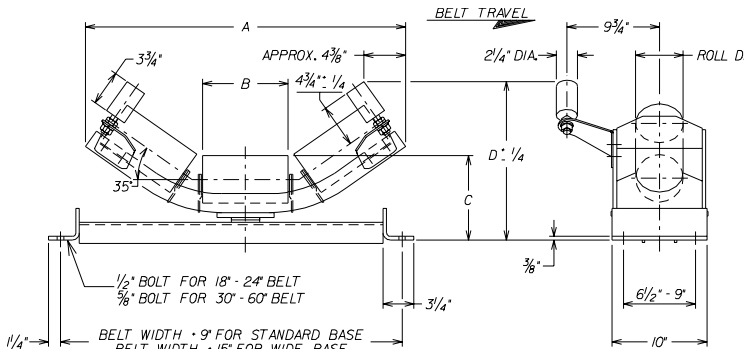
STANDARD BASE SHOWN



CSL36T203 20 DEG 6 INCH TROUGHING/TRAINING						
Belt Width	Std. Base	Wide Base	A	B	C	D
	Wt.	Wt.				
18	91	94	27 7/8	6 7/8	9 1/2	13 15/16
24	102	111	33 5/8	9	9 1/2	14 5/8
30	119	122	39 3/8	11 1/16	9 7/8	15 3/4
36	134	137	45 1/8	13 1/8	9 7/8	16 7/16
42	146	151	50 7/8	15 1/4	9 7/8	17 3/16
48	160	164	56 5/8	17 5/16	10 1/4	18 1/4
54	179	182	62 7/8	19 3/8	10 1/4	19 1/8
60	191	194	68 5/8	21 1/2	10 1/4	19 7/8

WIDE BASE SHOWN

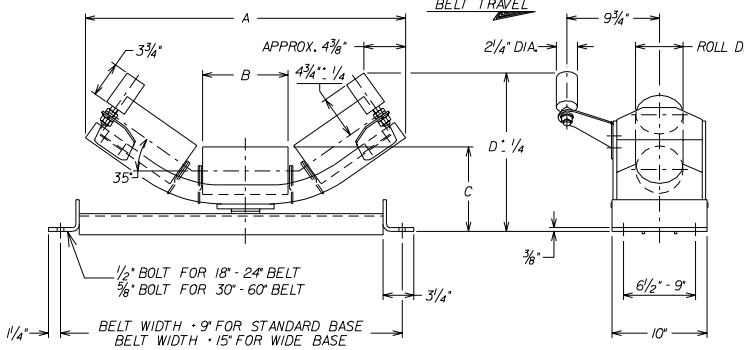
STANDARD BASE SHOWN



CSL35T353 35 DEG 5 INCH TROUGHING/TRAINING						
Belt Width	Std. Base	Wide Base	A	B	C	D
	Wt.	Wt.				
18	86	88	28 7/16	6 7/8	9	15 5/8
24	95	104	33 3/4	9	9	16 13/16
30	110	113	39	11 1/16	9 3/8	18 3/8
36	124	127	44 5/16	13 1/8	9 3/8	19 9/16
42	135	140	49 9/16	15 1/4	9 3/8	20 3/4
48	147	152	55 1/16	17 5/16	9 3/4	22 3/8
54	165	168	60 9/16	19 3/8	9 3/4	23 5/8
60	176	180	66 1/16	21 1/2	9 3/4	24 7/8

WIDE BASE SHOWN

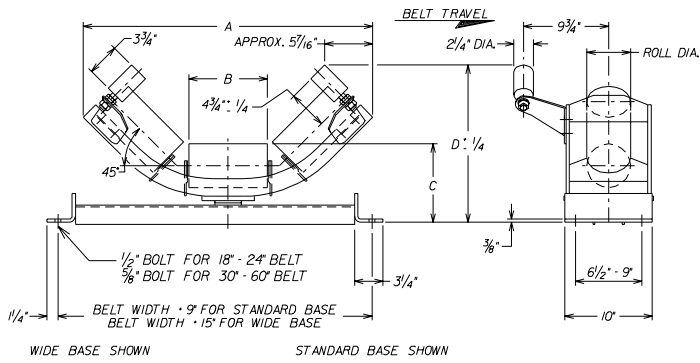
STANDARD BASE SHOWN



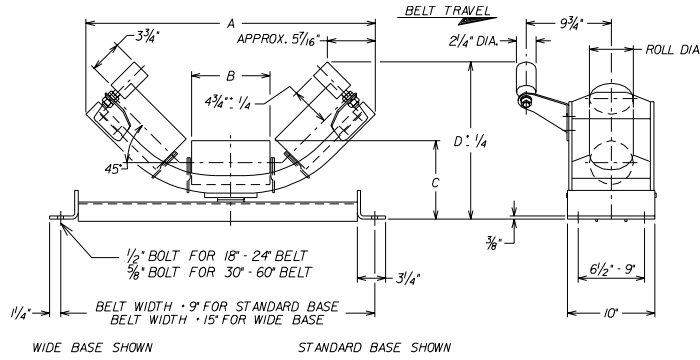
CSL36T353 35 DEG 6 INCH TROUGHING/TRAINING						
Belt Width	Std. Base	Wide Base	A	B	C	D
	Wt.	Wt.				
18	93	95	28 7/16	6 7/8	9 1/2	15 5/8
24	104	112	33 3/4	9	9 1/2	16 13/16
30	120	123	39	11 1/16	9 7/8	18 3/8
36	135	138	44 5/16	13 1/8	9 7/8	19 9/16
42	147	153	49 9/16	15 1/4	9 7/8	20 3/4
48	161	166	55 1/16	17 5/16	10 1/4	22 3/8
54	180	184	60 9/16	19 3/8	10 1/4	23 5/8
60	193	196	66 1/16	21 1/2	10 1/4	24 7/8

WIDE BASE SHOWN

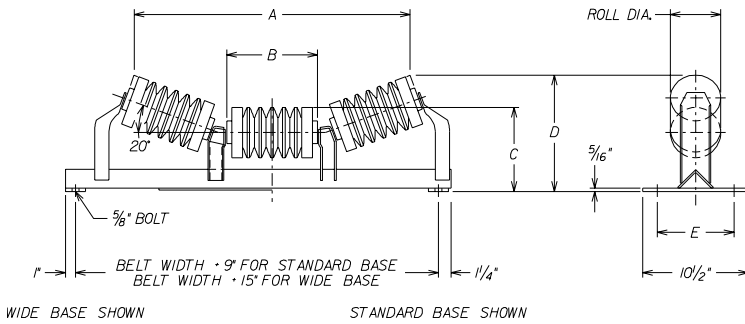
STANDARD BASE SHOWN



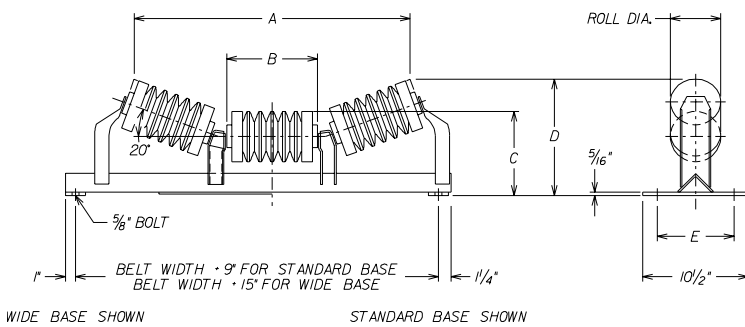
CSL35T453 45 DEG 5 INCH TROUGHING/TRAINING						
Belt Width	Std. Base	Wide Base	A	B	C	D
	Wt.	Wt.				
18	86	89	27 1/2	6 7/8	9	16 9/16
24	96	104	33 3/16	9	9	18 1/16
30	110	113	38	11 1/16	9 3/8	19 7/8
36	125	128	42 13/16	13 1/8	9 3/8	21 5/16
42	135	141	47 5/8	15 1/4	9 3/8	22 13/16
48	148	153	52 7/16	17 5/16	9 3/4	24 11/16
54	166	169	57 11/16	19 3/8	9 3/4	26 1/4
60	177	181	62 5/8	21 1/2	9 3/4	27 3/4



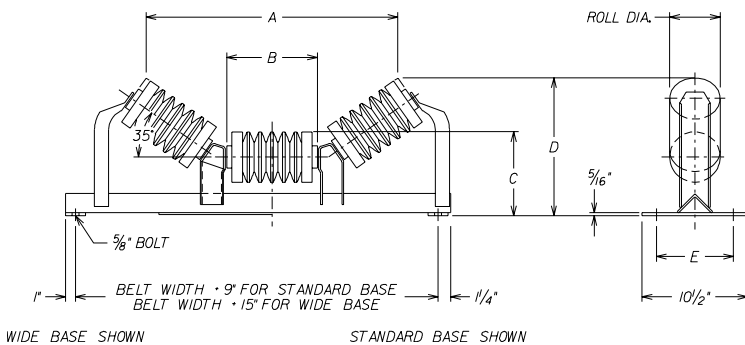
CSL36T453 45 DEG 6 INCH TROUGHING/TRAINING						
Belt Width	Std. Base	Wide Base	A	B	C	D
	Wt.	Wt.				
18	93	96	27 1/2	6 7/8	9 1/2	16 9/16
24	104	113	33 3/16	9	9 1/2	18 1/16
30	121	124	38	11 1/16	9 7/8	19 7/8
36	136	139	42 13/16	13 1/8	9 7/8	21 5/16
42	148	153	47 5/8	15 1/4	9 7/8	22 13/16
48	162	167	52 7/16	17 5/16	10 1/4	24 11/16
54	181	185	57 11/16	19 3/8	10 1/4	26 1/4
60	194	197	62 5/8	21 1/2	10 1/4	27 3/4



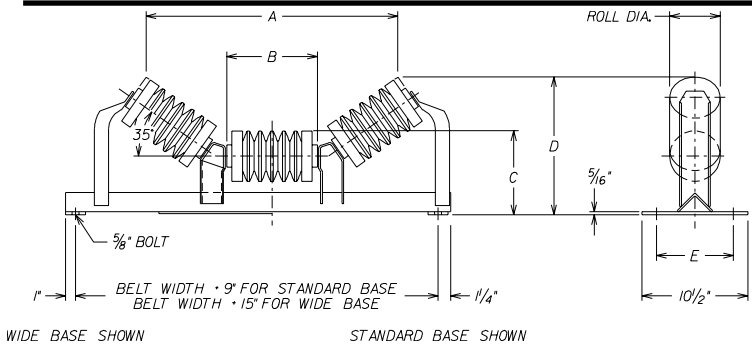
CSL35A203 20 DEG 5 INCH IMPACT / TROUGHING							
Belt Width	Std. Base	Wide Base	A	B	C	D	E
	Wt.	Wt.					
18	43	48	21 1/4	6 7/8	8 3/8	10 13/16	6 1/4 - 9
24	52	57	27 3/8	9	8 3/8	11 9/16	6 1/4 - 9
30	61	63	33 5/16	11 1/16	8 11/16	12 5/8	6 1/4 - 9
36	70	72	39 1/4	13 1/8	8 11/16	13 5/16	6 1/4 - 9
42	91	95	45 3/8	15 1/4	8 11/16	14 1/16	6 1/4 - 9
48	112	114	51 1/4	17 5/16	9 1/16	15 1/8	7 - 9
54	123	126	57 1/4	19 3/8	9 1/16	15 7/8	7 - 9
60	135	138	63 5/16	21 1/2	9 1/16	16 9/16	7 - 9



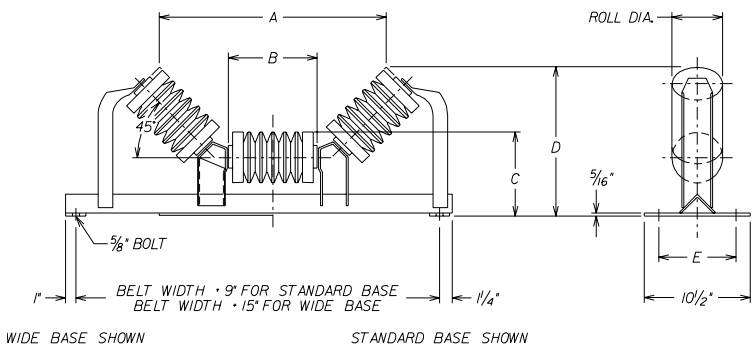
CSL36A203 20 DEG 6 INCH IMPACT / TROUGHING							
Belt Width	Std. Base	Wide Base	A	B	C	D	E
	Wt.	Wt.					
18	47	52	20 7/8	6 7/8	8 7/8	11 1/4	6 1/4 - 9
24	58	63	27	9	8 7/8	12	6 1/4 - 9
30	68	70	32 15/16	11 1/16	9 3/16	13 1/16	6 1/4 - 9
36	79	81	38 7/8	13 1/8	9 3/16	13 13/16	6 1/4 - 9
42	102	106	45	15 1/4	9 3/16	14 1/2	6 1/4 - 9
48	124	126	50 15/16	17 5/16	9 9/16	15 5/8	7 - 9
54	136	139	56 7/8	19 3/8	9 9/16	16 5/16	7 - 9
60	150	153	63	21 1/2	9 9/16	17 1/16	7 - 9



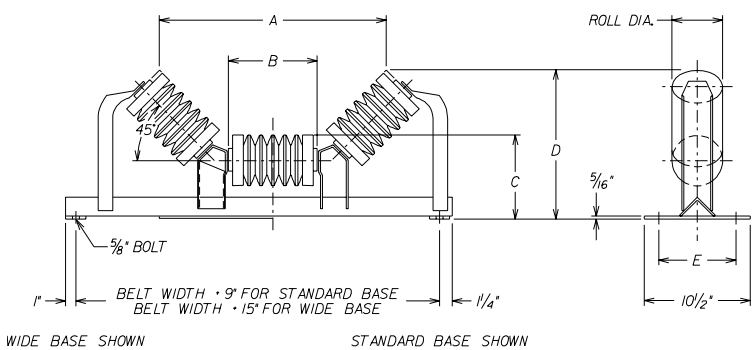
CSL35A353 35 DEG 5 INCH IMPACT / TROUGHING							
Belt Width	Std. Base	Wide Base	A	B	C	D	E
	Wt.	Wt.					
18	45	50	19 3/8	6 7/8	8 3/8	12 1/2	6 1/4 - 9
24	54	59	25	9	8 3/8	13 11/16	6 1/4 - 9
30	63	65	30 7/16	11 1/16	8 11/16	15 1/4	6 1/4 - 9
36	72	74	35 13/16	13 1/8	8 11/16	16 7/16	6 1/4 - 9
42	90	93	41 1/2	15 1/4	8 11/16	17 5/8	6 1/4 - 9
48	113	116	46 15/16	17 5/16	9 1/16	19 3/16	7 - 9
54	122	126	52 5/16	19 3/8	9 1/16	20 3/8	7 - 9
60	135	138	57 15/16	21 1/2	9 1/16	21 5/8	7 - 9



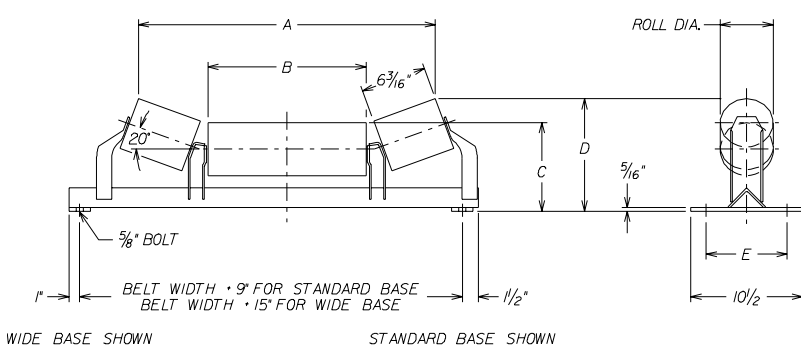
CSL36A353 35 DEG 6 INCH IMPACT / TROUGHING							
Belt Width	Std. Base	Wide Base	A	B	C	D	E
	Wt.	Wt.					
18	49	50	18 3/4	6 7/8	8 7/8	12 7/8	6 1/4 - 9
24	59	65	24 3/8	9	8 7/8	14 1/8	6 1/4 - 9
30	70	72	29 13/16	11 1/16	9 3/16	15 5/8	6 1/4 - 9
36	81	83	35 1/4	13 1/8	9 3/16	16 11/16	6 1/4 - 9
42	112	120	40 7/8	15 1/4	9 3/16	18 1/16	6 1/4 - 9
48	136	140	46 5/16	17 5/16	9 9/16	19 5/8	7 - 9
54	148	151	51 3/4	19 3/8	9 9/16	20 13/16	7 - 9
60	164	166	57 3/8	21 1/2	9 9/16	22	7 - 9



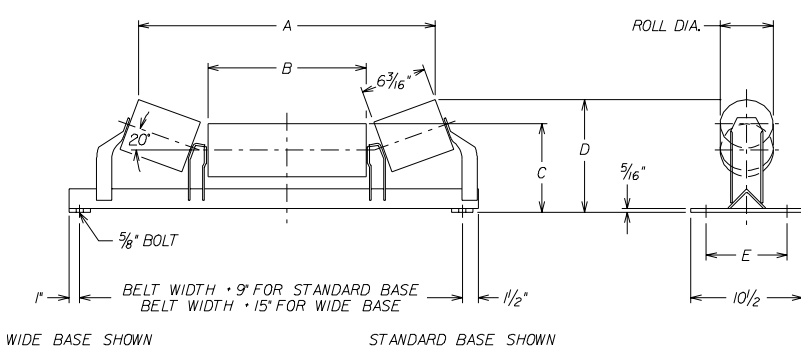
CSL35A453 45 DEG 5 INCH IMPACT / TROUGHING							
Belt Width	Std. Base	Wide Base	A	B	C	D	E
	Wt.	Wt.					
18	49	55	17 11/16	6 7/8	8 3/8	13 7/16	6 1/4 - 9
24	58	63	22 13/16	9	8 3/8	14 15/16	6 1/4 - 9
30	70	71	27 3/4	11 1/16	8 11/16	16 3/4	6 1/4 - 9
36	79	81	32 3/4	13 1/8	8 11/16	18 3/16	6 1/4 - 9
42	112	120	37 7/8	15 1/4	8 11/16	19 11/16	6 1/4 - 9
48	136	140	42 7/8	17 5/16	9 1/16	21 9/16	7 - 9
54	148	151	47 13/16	19 3/8	9 1/16	23 1/16	7 - 9
60	164	166	53	21 1/2	9 1/16	24 1/2	7 - 9



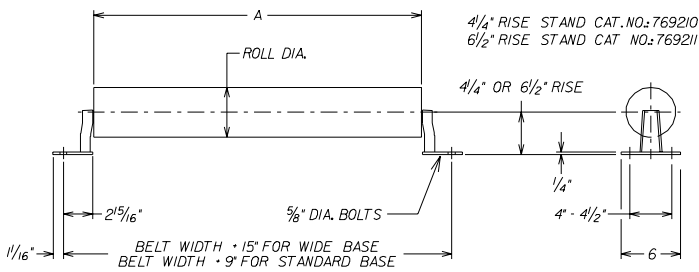
CSL36A453 45 DEG 6 INCH IMPACT / TROUGHING							
Belt Width	Std. Base	Wide Base	A	B	C	D	E
	Wt.	Wt.					
18	53	58	17 1/16	6 7/8	8 7/8	13 11/16	6 1/4 - 9
24	64	69	22 3/16	9	8 7/8	15 5/16	6 1/4 - 9
30	77	77	27 3/16	11 1/16	9 3/16	17 1/8	6 1/4 - 9
36	88	90	32 1/8	13 1/8	9 3/16	18 9/16	6 1/4 - 9
42	112	120	37 1/4	15 1/4	9 3/16	20 1/16	6 1/4 - 9
48	136	140	42 1/2	17 5/16	9 9/16	21 15/16	7 - 9
54	148	151	47 1/4	19 3/8	9 9/16	23 3/8	7 - 9
60	164	166	52 3/8	21 1/2	9 9/16	24 7/8	7 - 9



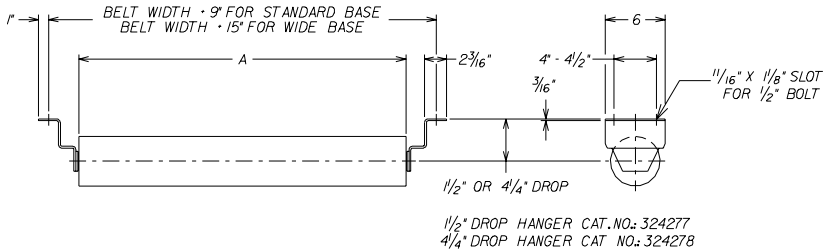
CSL125203 20 DEG 5 INCH PICKING							
Belt Width	Std. Base	Wide Base	A	B	C	D	E
	Wt.	Wt.					
24	50	55	27 15/16	14 7/8	8 3/8	10 5/8	6 1/4 - 9
30	58	60	33 15/16	20 7/8	8 11/16	10 15/16	6 1/4 - 9
36	64	66	39 15/16	26 7/8	8 11/16	10 15/16	6 1/4 - 9
42	76	78	45 15/16	32 7/8	8 11/16	10 15/16	6 1/4 - 9
48	85	89	51 15/16	38 7/8	9 1/16	11 5/16	7 - 9
54	94	97	57 15/16	44 7/8	9 1/16	11 5/16	7 - 9
60	106	109	63 15/16	50 7/8	9 1/16	11 5/16	7 - 9



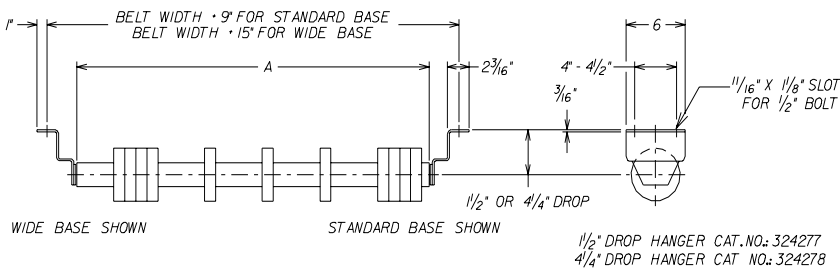
CSL126203 20 DEG 6 INCH PICKING							
Belt Width	Std. Base	Wide Base	A	B	C	D	E
	Wt.	Wt.					
24	58	63	27 5/8	14 7/8	8 7/8	11 1/8	6 1/4 - 9
30	69	70	33 5/8	20 7/8	9 3/16	11 7/16	6 1/4 - 9
36	75	77	39 5/8	26 7/8	9 3/16	11 7/16	6 1/4 - 9
42	88	90	45 5/8	32 7/8	9 3/16	11 7/16	6 1/4 - 9
48	98	103	51 5/8	38 7/8	9 9/16	11 13/16	7 - 9
54	109	112	57 5/8	44 7/8	9 9/16	11 13/16	7 - 9
60	113	116	63 5/8	50 7/8	9 9/16	11 13/16	7 - 9



For 54" and 60" belt width use CEMA D roll.



For 54" and 60" belt width use CEMA D roll.

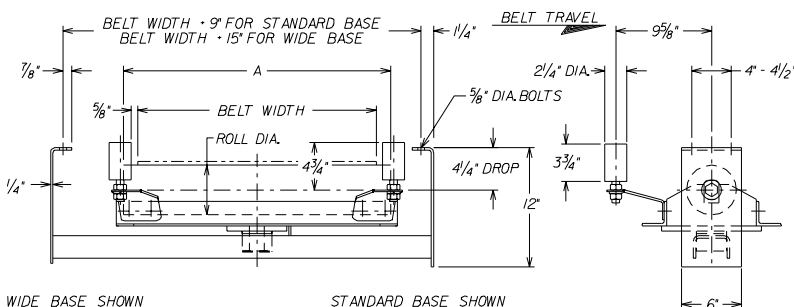
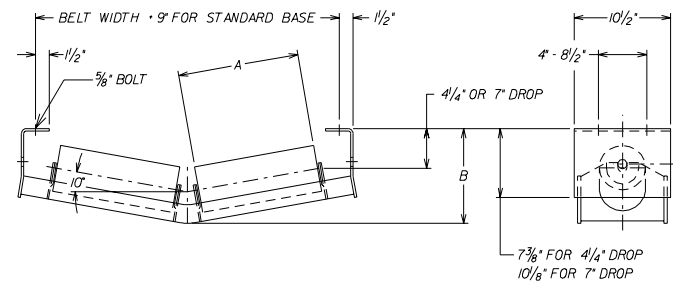


CSL153 5 INCH FLAT CARRYING			CSL163 6 INCH FLAT CARRYING		
Belt Width	Std. Base	A	Belt Width	Std. Base	A
	Wt.			Wt.	
18	23	20 7/8	18	29	20 7/8
24	28	26 7/8	24	34	26 7/8
30	32	32 7/8	30	40	32 7/8
36	36	38 7/8	36	45	38 7/8
42	40	44 7/8	42	51	44 7/8
48	45	50 7/8	48	57	50 7/8

CSL153 5 INCH FLAT RETURN			CSL163 6 INCH FLAT RETURN		
Belt Width	Std. Base	A	Belt Width	Std. Base	A
	Wt.			Wt.	
18	23	20 7/8	18	29	20 7/8
24	28	26 7/8	24	34	26 7/8
30	32	32 7/8	30	40	32 7/8
36	36	38 7/8	36	45	38 7/8
42	40	44 7/8	42	51	44 7/8
48	45	50 7/8	48	57	50 7/8

CSL153DM 5 INCH RUBBER DISC RETURN (MASSED ENDS)					CSL163DM 6 INCH RUBBER DISC RETURN (MASSED ENDS)				
Belt Width	Std. Base		Wide Base		Belt Width	Std. Base		Wide Base	
	A	Wt.	A	Wt.		A	Wt.	A	Wt.
24	26 7/8	26	32 7/8	32	24	26 7/8	30	32 7/8	38
30	32 7/8	30	38 7/8	36	30	32 7/8	34	38 7/8	42
36	38 7/8	33	44 7/8	40	36	38 7/8	38	44 7/8	46
42	44 7/8	37	50 7/8	43	42	44 7/8	42	50 7/8	50
48	50 7/8	40	56 7/8	46	48	50 7/8	46	56 7/8	53
54	56 7/8	44	62 7/8	50	54	56 7/8	50	62 7/8	57
60	62 7/8	47	68 7/8	53	60	62 7/8	54	68 7/8	61
66	68 7/8	51	74 7/8	57	66	68 7/8	58	74 7/8	66
72	74 7/8	55	80 7/8	61	72	74 7/8	62	80 7/8	70

CSL25103 5 INCH V-RETURN					CSL26103 6 INCH V-RETURN				
Belt Width	Std. Base Wt.	A	4 1/4" Drop	7" Drop	Belt Width	Std. Base Wt.	A	4 1/4" Drop	7" Drop
			B	B				B	B
24	63	13 1/8	10 1/4	13	24	69	13 1/8	10 1/4	13
30	71	17 5/16	10 3/4	13 1/2	30	79	17 5/16	10 3/4	13 1/2
36	76	19 3/8	11 5/16	14 1/16	36	84	19 3/8	11 5/16	14 1/16
42	83	22 7/8	11 13/16	14 9/16	42	93	22 7/8	11 13/16	14 9/16
48	87	25 5/8	12 5/16	15 1/16	48	100	25 5/8	12 5/16	15 1/16
54	101	29 1/4	12 7/8	15 5/8	54	115	29 1/4	12 7/8	15 5/8
60	107	32 1/4	13 3/8	16 1/8	60	123	32 1/4	13 3/8	16 1/8

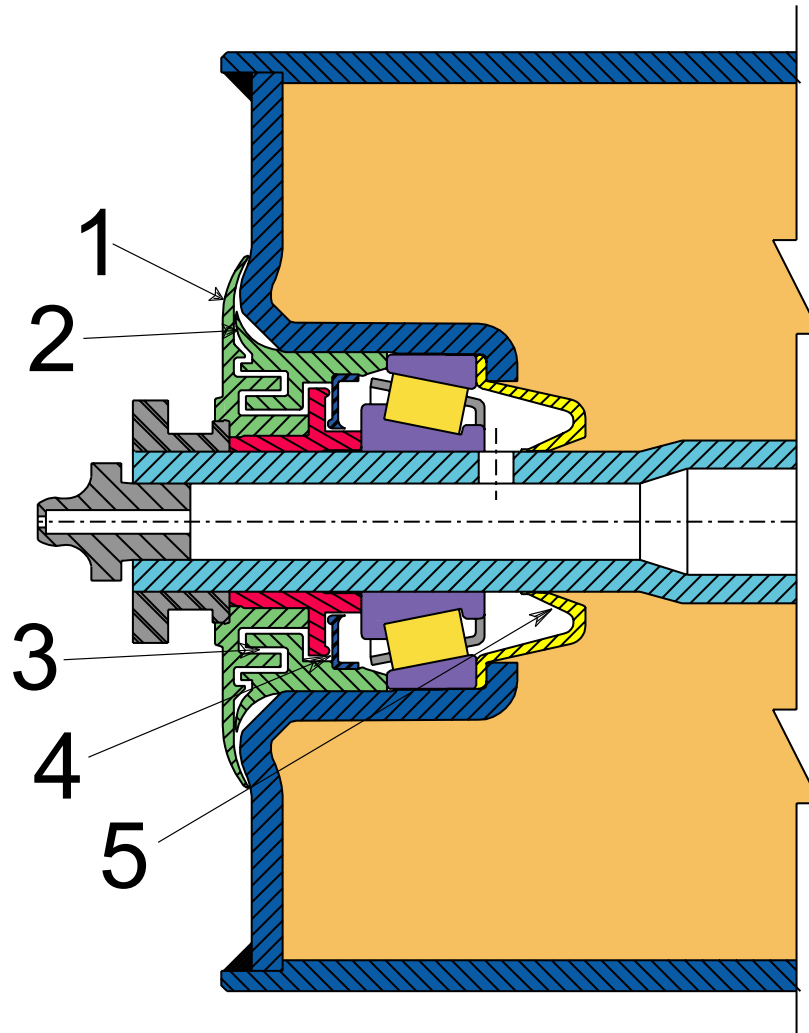


For 54" and 60" belt width use CEMA D roll.

CSL153T 5 INCH RETURN TRAINING				CSL163T 6 INCH RETURN TRAINING			
Belt Width	A	Std. Base	Wide Base	Belt Width	A	Std. Base	Wide Base
		Wt.	Wt.			Wt.	Wt.
18	20 7/8	95	98	18	20 7/8	100	104
24	26 7/8	106	109	24	26 7/8	113	116
30	32 7/8	118	121	30	32 7/8	126	129
36	38 7/8	129	132	36	38 7/8	139	142
42	44 7/8	141	144	42	44 7/8	151	154
48	50 7/8	159	162	48	50 7/8	171	174

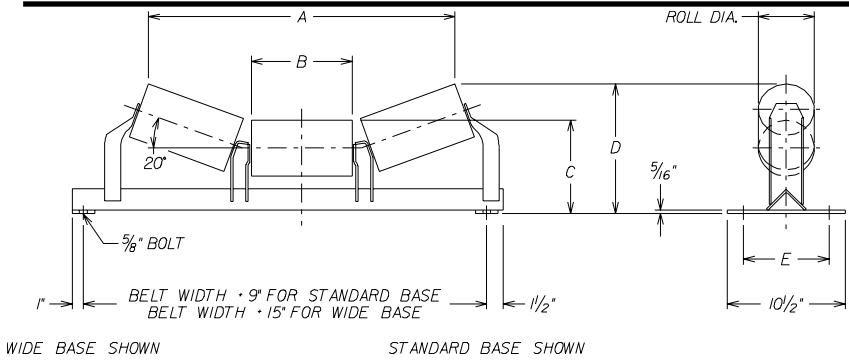
## Jeffrey Permaseal III™ Roll Design Features

- 3/4" Tapered Roller Bearing
- 1 1/4" Shaft Reduced to 3/4" at Bearing
- Sealed or Regreaseable, Non-Purging Seal
- Counter Bored Roll Shell, Protected Weld

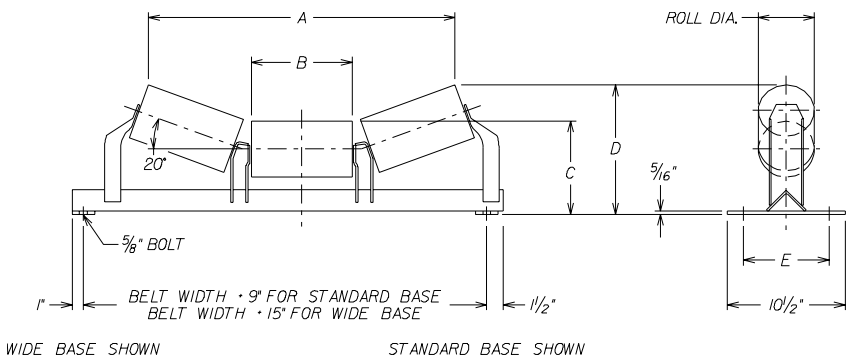


1. Exterior Shield
2. Flinger
3. Grease Filled, Multiple Path Labyrinth Seal
4. Contact Lip Seal
5. Rear Seal

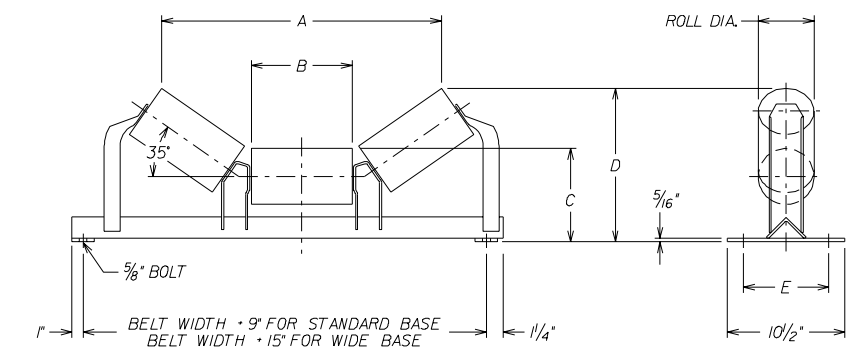
*Note : DSL rolls have shaft end plugs instead of grease fittings as shown.  
Rolls 13" or shorter have 3/4" shafts.*



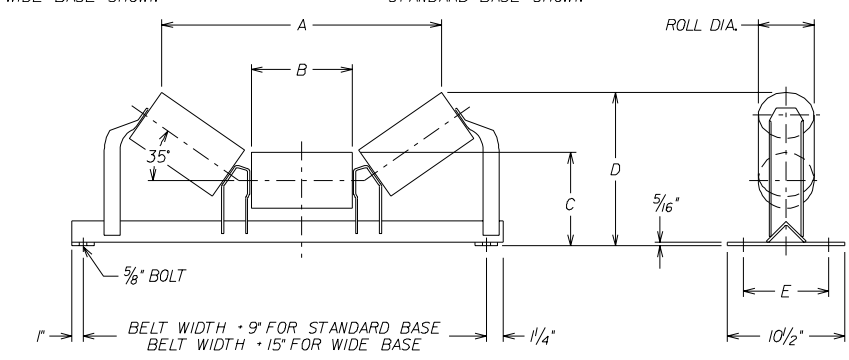
D35203 20 DEG 5 INCH TROUGHING							
Belt Width	Std. Base	Wide Base	A	B	C	D	E
	Wt.	Wt.					
24	53	59	27 3/8	9	8 3/8	11 9/16	6 1/4 - 9
30	60	67	33 5/16	11 1/16	8 11/16	12 5/8	6 1/4 - 9
36	72	80	39 1/4	13 1/8	8 11/16	13 5/16	6 1/4 - 9
42	85	87	45 3/8	15 1/4	8 11/16	14 1/16	6 1/4 - 9
48	93	96	51 1/4	17 5/16	9 1/16	15 1/8	7 - 9
54	109	112	57 1/4	19 3/8	9 1/16	15 7/8	7 - 9
60	118	121	63 5/16	21 1/2	9 1/16	16 9/16	7 - 9
66	127	130	69 1/4	23 9/16	9 7/16	17 5/8	7 1/2 - 9
72	136	139	75 1/4	25 5/8	9 7/16	18 5/16	7 1/2 - 9



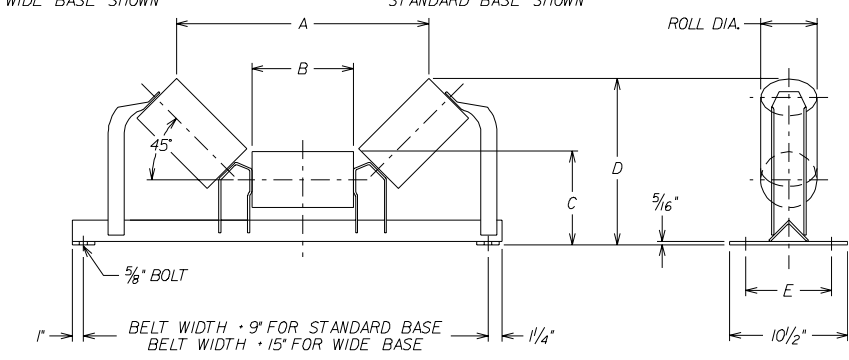
D36203 20 DEG 6 INCH TROUGHING							
Belt Width	Std. Base	Wide Base	A	B	C	D	E
	Wt.	Wt.					
24	61	66	27	9	8 7/8	12	6 1/4 - 9
30	70	76	32 15/16	11 1/16	9 3/16	13 1/16	6 1/4 - 9
36	83	90	38 7/8	13 1/8	9 3/16	13 13/16	6 1/4 - 9
42	97	100	45	15 1/4	9 3/16	14 1/2	6 1/4 - 9
48	107	110	50 15/16	17 5/16	9 9/16	15 5/8	7 - 9
54	124	127	56 7/8	19 3/8	9 9/16	16 5/16	7 - 9
60	135	138	63	21 1/2	9 9/16	17 1/16	7 - 9
66	145	148	68 15/16	23 9/16	9 15/16	18 1/8	7 1/2 - 9
72	155	158	74 7/8	25 5/8	9 15/16	18 13/16	7 1/2 - 9



D35353 35 DEG 5 INCH TROUGHING							
Belt Width	Std. Base	Wide Base	A	B	C	D	E
	Wt.	Wt.					
24	54	60	25	9	8 3/8	13 11/16	6 1/4 - 9
30	62	69	30 7/16	11 1/16	8 11/16	15 1/4	6 1/4 - 9
36	75	82	35 13/16	13 1/8	8 11/16	16 7/16	6 1/4 - 9
42	87	90	41 1/2	15 1/4	8 11/16	17 5/8	6 1/4 - 9
48	96	99	46 15/16	17 5/16	9 1/16	19 3/16	7 - 9
54	114	117	52 5/16	19 3/8	9 1/16	20 3/8	7 - 9
60	124	127	57 15/16	21 1/2	9 1/16	21 5/8	7 - 9
66	134	137	63 3/8	23 9/16	9 7/16	23 1/8	7 1/2 - 9
72	144	158	68 13/16	25 5/8	9 7/16	24 5/16	7 1/2 - 9



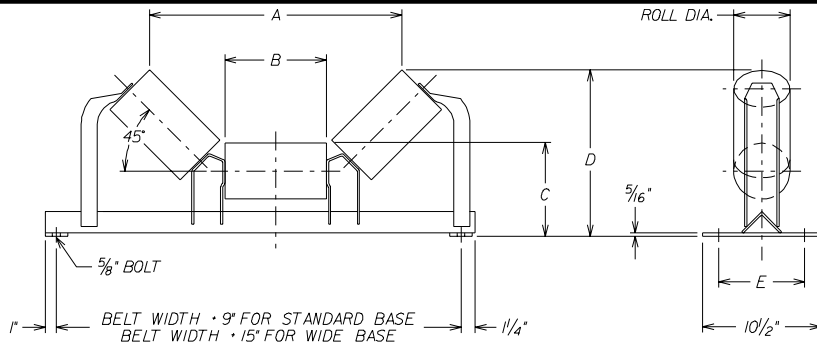
D36353 35 DEG 6 INCH TROUGHING							
Belt Width	Std. Base	Wide Base	A	B	C	D	E
	Wt.	Wt.					
24	62	68	24 3/8	9	8 7/8	14 1/8	6 1/4 - 9
30	72	78	29 13/16	11 1/16	9 3/16	15 5/8	6 1/4 - 9
36	85	93	35 1/4	13 1/8	9 3/16	16 11/16	6 1/4 - 9
42	100	102	40 7/8	15 1/4	9 3/16	18 1/16	6 1/4 - 9
48	110	112	46 5/16	17 5/16	9 9/16	19 5/8	7 - 9
54	129	133	51 3/4	19 3/8	9 9/16	20 13/16	7 - 9
60	141	144	57 3/8	21 1/2	9 9/16	22	7 - 9
66	152	155	62 13/16	23 9/16	9 15/16	23 9/16	7 1/2 - 9
72	163	166	68 1/4	25 5/8	9 15/16	24 3/4	7 1/2 - 9



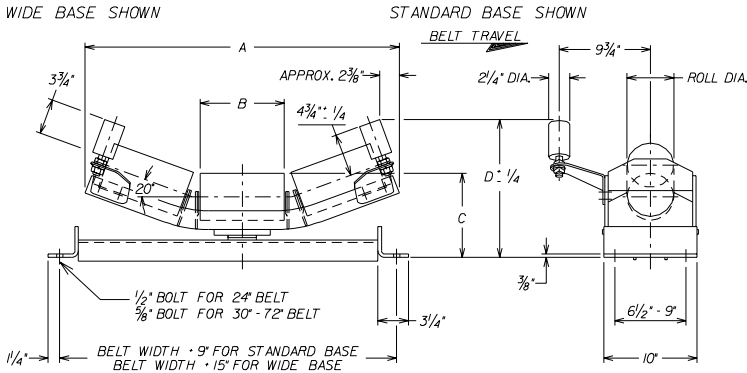
D35453 45 DEG 5 INCH TROUGHING							
Belt Width	Std. Base	Wide Base	A	B	C	D	E
	Wt.	Wt.					
24	59	65	22 13/16	9	8 3/8	14 15/16	6 1/4 - 9
30	68	74	27 3/4	11 1/16	8 11/16	16 3/4	6 1/4 - 9
36	81	89	32 3/4	13 1/8	8 11/16	18 3/16	6 1/4 - 9
42	95	97	37 7/8	15 1/4	8 11/16	19 11/16	6 1/4 - 9
48	105	107	42 7/8	17 5/16	9 1/16	21 9/16	7 - 9
54	119	122	47 13/16	19 3/8	9 1/16	23 1/16	7 - 9
60	130	133	53	21 1/2	9 1/16	24 1/2	7 - 9
66	140	144	57 15/16	23 9/16	9 7/16	26 5/16	7 1/2 - 9
72	151	155	62 15/16	25 5/8	9 7/16	27 13/16	7 1/2 - 9

# CEMA D

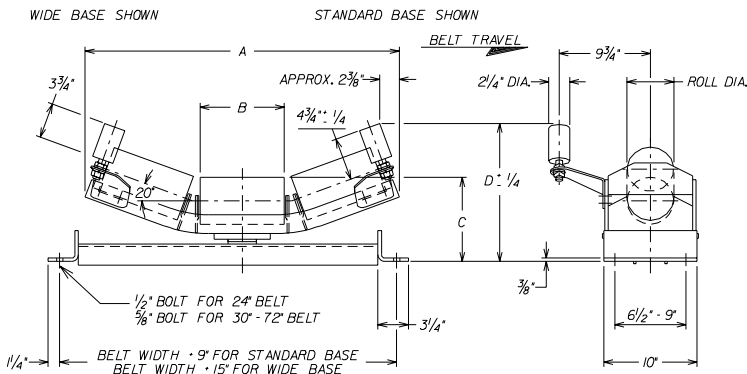
# Roll Diameter 5" and 6"



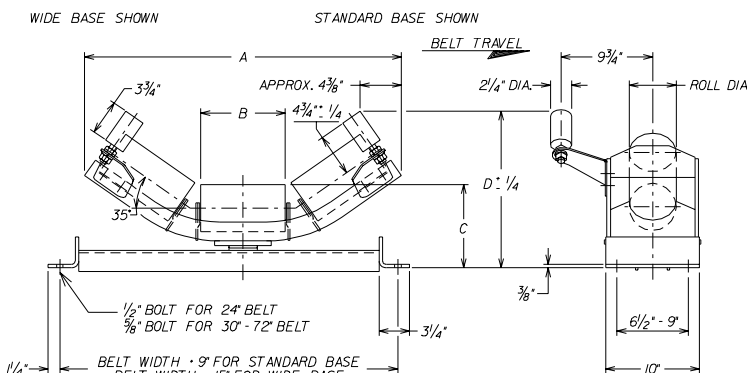
D36453 45 DEG 6 INCH TROUGHING							
Belt Width	Std. Base	Wide Base	A	B	C	D	E
	Wt.	Wt.					
24	67	73	22 3/16	9	8 7/8	15 5/16	6 1/4 - 9
30	77	84	27 3/16	11 1/16	9 3/16	17 1/8	6 1/4 - 9
36	92	99	32 1/8	13 1/8	9 3/16	18 9/16	6 1/4 - 9
42	107	110	37 1/4	15 1/4	9 3/16	20 1/16	6 1/4 - 9
48	118	121	42 1/4	17 5/16	9 9/16	21 15/16	7 - 9
54	134	137	47 1/4	19 3/8	9 9/16	23 3/8	7 - 9
60	146	149	52 3/8	21 1/2	9 9/16	24 7/8	7 - 9
66	158	161	57 5/16	23 9/16	9 15/16	26 11/16	7 1/2 - 9
72	170	173	62 5/16	25 5/8	9 15/16	28 1/8	7 1/2 - 9



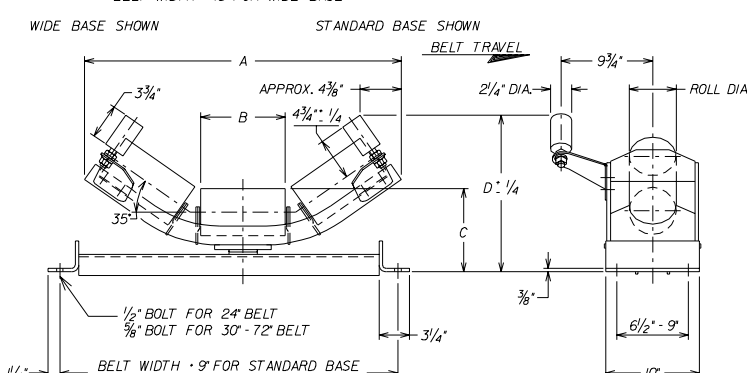
D35T203 20 DEG 5 INCH TROUGHING/TRAINING						
Belt Width	Std. Base	Wide Base	A	B	C	D
	Wt.	Wt.				
24	96	99	33 5/8	9	9	14 5/8
30	106	114	39 3/8	11 1/16	9 3/8	15 3/4
36	121	124	45 1/8	13 1/8	9 3/8	16 7/16
42	136	141	50 7/8	15 1/4	9 3/8	17 3/16
48	149	152	56 5/8	17 5/16	9 3/4	18 1/4
54	160	165	62 7/8	19 3/8	9 3/4	19 1/8
60	179	186	68 5/8	21 1/2	9 3/4	19 7/8
66	195	198	74 1/4	23 9/16	10 1/8	20 15/16
72	207	210	80	25 5/8	10 1/8	21 5/8



D36T203 20 DEG 6 INCH TROUGHING/TRAINING						
Belt Width	Std. Base	Wide Base	A	B	C	D
	Wt.	Wt.				
24	104	107	33 5/8	9	9 1/2	14 5/8
30	116	123	39 3/8	11 1/16	9 7/8	15 3/4
36	131	134	45 1/8	13 1/8	9 7/8	16 7/16
42	148	154	50 7/8	15 1/4	9 7/8	17 3/16
48	163	166	56 5/8	17 5/16	10 1/4	18 1/4
54	175	180	62 7/8	19 3/8	10 1/4	19 1/8
60	196	203	68 5/8	21 1/2	10 1/4	19 7/8
66	212	216	74 1/4	23 9/16	10 5/8	20 15/16
72	225	229	80	25 5/8	10 5/8	21 5/8

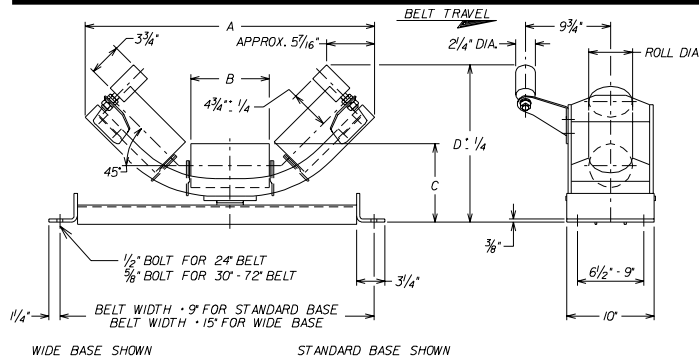


D35T353 35 DEG 5 INCH TROUGHING/TRAINING						
Belt Width	Std. Base	Wide Base	A	B	C	D
	Wt.	Wt.				
24	98	101	33 3/4	9	9	16 13/16
30	108	115	39	11 1/16	9 3/8	18 3/8
36	122	125	44 5/16	13 1/8	9 3/8	19 9/16
42	137	143	49 9/16	15 1/4	9 3/8	20 3/4
48	150	154	55 1/16	17 5/16	9 3/4	22 3/8
54	161	166	60 9/16	19 3/8	9 3/4	23 5/8
60	181	188	66 1/16	21 1/2	9 3/4	24 7/8
66	196	200	71 5/16	23 9/16	10 1/8	26 7/16
72	208	212	76 5/8	25 5/8	10 1/8	27 5/8

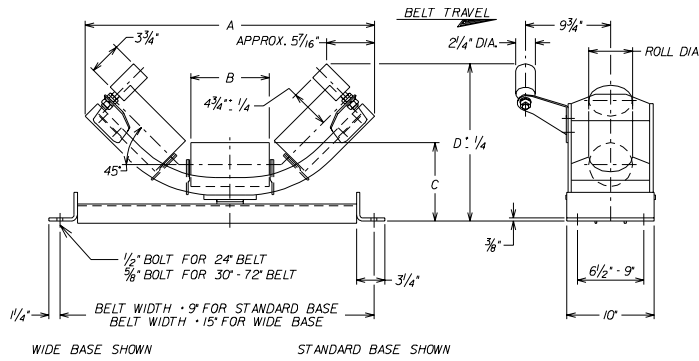


D36T353 35 DEG 6 INCH TROUGHING/TRAINING						
Belt Width	Std. Base	Wide Base	A	B	C	D
	Wt.	Wt.				
24	105	108	33 3/4	9	9 1/2	16 13/16
30	117	124	39	11 1/16	9 7/8	18 3/8
36	132	135	44 5/16	13 1/8	9 7/8	19 9/16
42	150	155	49 9/16	15 1/4	9 7/8	20 3/4
48	164	168	55 1/16	17 5/16	10 1/4	22 3/8
54	177	181	60 9/16	19 3/8	10 1/4	23 5/8
60	197	205	66 1/16	21 1/2	10 1/4	24 7/8
66	214	217	71 5/16	23 9/16	10 5/8	26 7/16
72	227	231	76 5/8	25 5/8	10 5/8	27 5/8

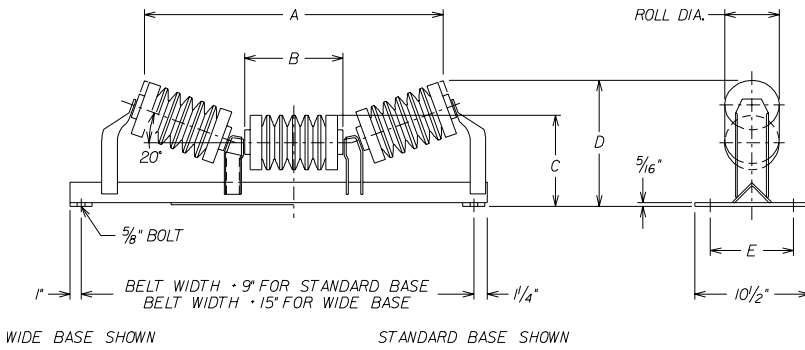
Note: Substitute DSL for D when ordering CEMA D sealed for life idlers.



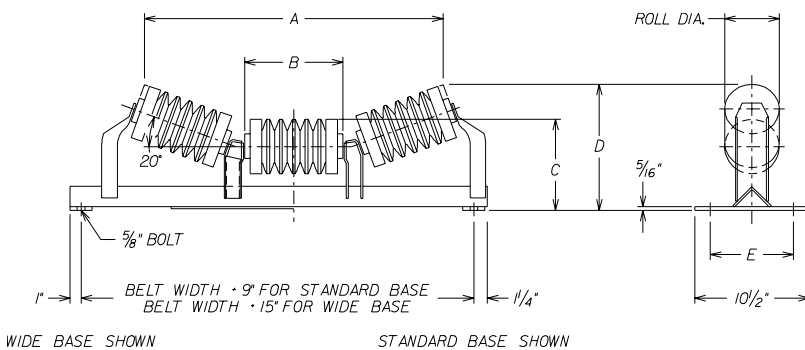
D35T453 45 DEG 5 INCH TROUGHING/TRAINING						
Belt Width	Std. Base	Wide Base	A	B	C	D
	Wt.	Wt.				
24	98	101	33 3/16	9	9	18 1/16
30	108	115	38	11 1/16	9 3/8	19 7/8
36	123	126	42 13/16	13 1/8	9 3/8	21 5/16
42	138	144	47 5/8	15 1/4	9 3/8	22 13/16
48	151	155	52 7/16	17 5/16	9 3/4	24 11/16
54	162	167	57 11/16	19 3/8	9 3/4	26 1/4
60	182	189	62 5/8	21 1/2	9 3/4	27 3/4
66	197	201	67 5/8	23 9/16	10 1/8	29 9/16
72	209	213	72 3/8	25 5/8	10 1/8	31



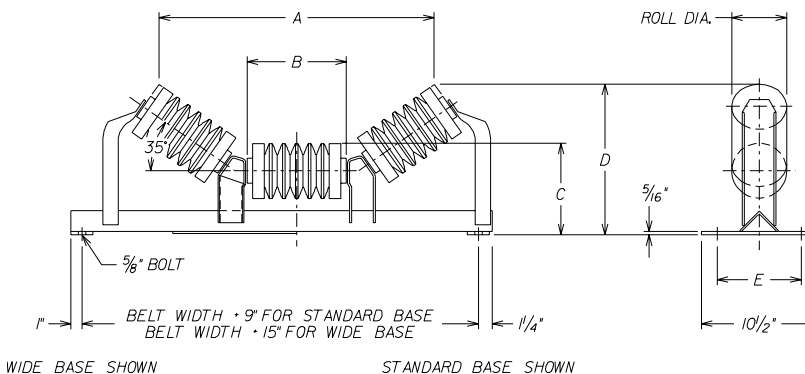
D36T453 45 DEG 6 INCH TROUGHING/TRAINING						
Belt Width	Std. Base	Wide Base	A	B	C	D
	Wt.	Wt.				
24	106	109	33 3/16	9	9 1/2	18 1/16
30	118	125	38	11 1/16	9 7/8	19 7/8
36	133	136	42 13/16	13 1/8	9 7/8	21 5/16
42	151	156	47 5/8	15 1/4	9 7/8	22 13/16
48	165	169	52 7/16	17 5/16	10 1/4	24 11/16
54	178	182	57 11/16	19 3/8	10 1/4	26 1/4
60	196	206	62 5/8	21 1/2	10 1/4	27 3/4
66	215	218	67 5/8	23 9/16	10 5/8	29 9/16
72	228	232	72 3/8	25 5/8	10 5/8	31



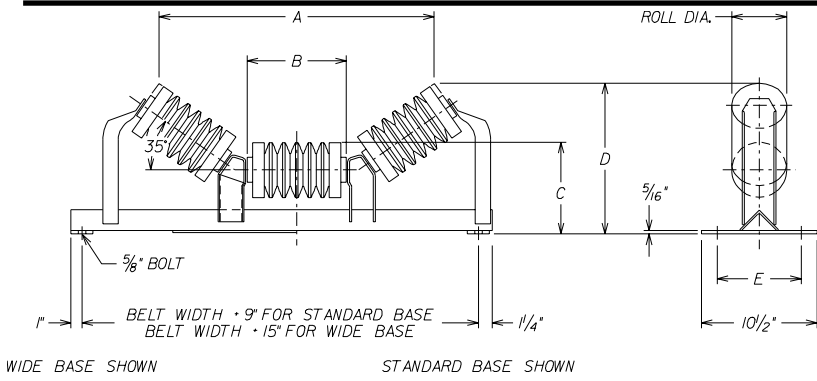
D35A203 20 DEG 5 INCH IMPACT / TROUGHING							
Belt Width	Std. Base	Wide Base	A	B	C	D	E
	Wt.	Wt.					
24	57	61	27 3/8	9	8 3/8	11 9/16	6 1/4 - 9
30	64	67	33 5/16	11 1/16	8 11/16	12 5/8	6 1/4 - 9
36	73	95	39 1/4	13 1/8	8 11/16	13 5/16	6 1/4 - 9
42	102	105	45 3/8	15 1/4	8 11/16	14 1/16	6 1/4 - 9
48	114	117	51 1/4	17 5/16	9 1/16	15 1/8	7 - 9
54	123	126	57 1/4	19 3/8	9 1/16	15 7/8	7 - 9
60	141	144	63 5/16	21 1/2	9 1/16	16 9/16	7 - 9
66	148	150	69 1/4	23 9/16	9 7/16	17 5/8	7 1/2 - 9
72	154	158	75 1/4	25 5/8	9 7/16	18 5/16	7 1/2 - 9



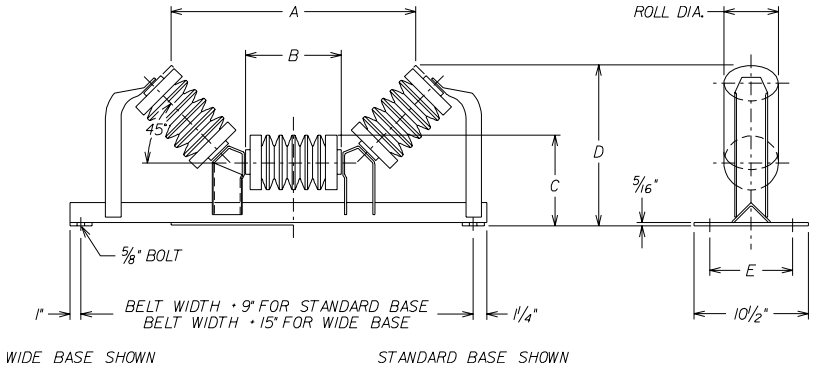
D36A203 20 DEG 6 INCH IMPACT / TROUGHING							
Belt Width	Std. Base	Wide Base	A	B	C	D	E
	Wt.	Wt.					
24	60	66	27	9	8 7/8	12	6 1/4 - 9
30	68	74	32 15/16	11 1/16	8 7/8	13 1/16	6 1/4 - 9
36	84	91	38 7/8	13 1/8	8 7/8	13 13/16	6 1/4 - 9
42	100	102	45	15 1/4	9 3/16	14 1/2	6 1/4 - 9
48	112	114	50 15/16	17 5/16	9 3/16	15 5/8	7 - 9
54	128	131	56 7/8	19 3/8	9 3/16	16 5/16	7 - 9
60	141	144	63	21 1/2	9 9/16	17 1/16	7 - 9
66	154	157	68 15/16	23 9/16	9 15/16	18 1/8	7 1/2 - 9
72	163	166	74 7/8	25 5/8	9 15/16	18 13/16	7 1/2 - 9



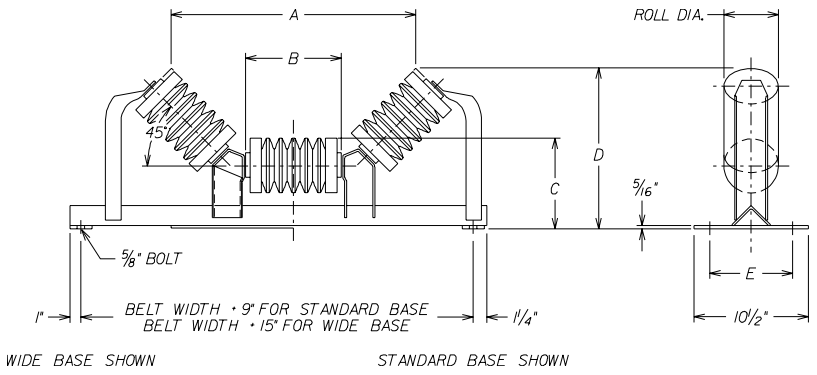
D35A353 35 DEG 5 INCH IMPACT / TROUGHING							
Belt Width	Std. Base	Wide Base	A	B	C	D	E
	Wt.	Wt.					
24	58	62	25	9	8 3/8	13 11/16	6 1/4 - 9
30	66	69	30 7/16	11 1/16	8 11/16	15 1/4	6 1/4 - 9
36	75	97	35 13/16	13 1/8	8 11/16	16 7/16	6 1/4 - 9
42	105	108	41 1/2	15 1/4	8 11/16	17 5/8	6 1/4 - 9
48	117	120	46 15/16	17 5/16	9 1/16	19 3/16	7 - 9
54	129	132	52 5/16	19 3/8	9 1/16	20 3/8	7 - 9
60	147	150	57 15/16	21 1/2	9 1/16	21 5/8	7 - 9
66	155	157	63 3/8	23 9/16	9 7/16	23 1/8	7 1/2 - 9
72	162	165	68 13/16	25 5/8	9 7/16	24 5/16	7 1/2 - 9



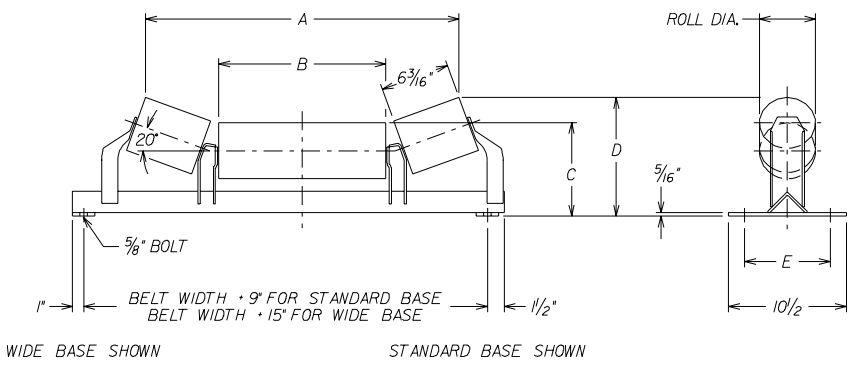
D36A353 35 DEG 6 INCH IMPACT / TROUGHING							
Belt Width	Std. Base	Wide Base	A	B	C	D	E
	Wt.	Wt.					
24	61	67	24 3/8	9	8 7/8	14 1/8	6 1/4 - 9
30	70	76	29 13/16	11 1/16	9 3/16	15 5/8	6 1/4 - 9
36	86	94	35 1/4	13 1/8	9 3/16	16 11/16	6 1/4 - 9
42	102	105	40 7/8	15 1/4	9 3/16	18 1/16	6 1/4 - 9
48	115	117	46 5/16	17 5/16	9 9/16	19 5/8	7 - 9
54	133	137	51 3/4	19 3/8	9 9/16	20 13/16	7 - 9
60	147	150	57 3/8	21 1/2	9 9/16	22	7 - 9
66	161	164	62 13/16	23 9/16	9 15/16	23 9/16	7 1/2 - 9
72	171	174	68 1/4	25 5/8	9 15/16	24 3/4	7 1/2 - 9



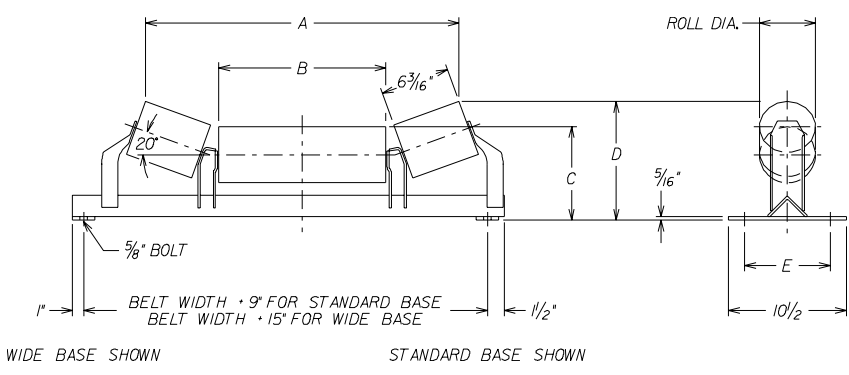
D35A453 45 DEG 5 INCH IMPACT / TROUGHING							
Belt Width	Std. Base	Wide Base	A	B	C	D	E
	Wt.	Wt.					
24	59	63	22 13/16	9	8 3/8	14 15/16	6 1/4 - 9
30	68	71	27 3/4	11 1/16	8 11/16	16 3/4	6 1/4 - 9
36	77	99	32 3/4	13 1/8	8 11/16	18 3/16	6 1/4 - 9
42	108	111	37 7/8	15 1/4	8 11/16	19 11/16	6 1/4 - 9
48	120	123	42 7/8	17 5/16	9 1/16	21 9/16	7 - 9
54	135	138	47 13/16	19 3/8	9 1/16	23 1/16	7 - 9
60	153	156	53	21 1/2	9 1/16	24 1/2	7 - 9
66	162	164	57 15/16	23 9/16	9 7/16	26 5/16	7 1/2 - 9
72	170	172	62 15/16	25 5/8	9 7/16	27 13/16	7 1/2 - 9



D36A453 45 DEG 6 INCH IMPACT / TROUGHING							
Belt Width	Std. Base	Wide Base	A	B	C	D	E
	Wt.	Wt.					
24	66	72	22 3/16	9	8 7/8	15 5/16	6 1/4 - 9
30	76	82	27 3/16	11 1/16	9 3/16	17 1/8	6 1/4 - 9
36	93	100	32 1/8	13 1/8	9 3/16	18 9/16	6 1/4 - 9
42	110	112	37 1/4	15 1/4	9 3/16	20 1/16	6 1/4 - 9
48	123	126	42 1/4	17 5/16	9 9/16	21 15/16	7 - 9
54	138	141	47 1/4	19 3/8	9 9/16	23 3/8	7 - 9
60	153	156	52 3/8	21 1/2	9 9/16	24 7/8	7 - 9
66	167	170	57 5/16	23 9/16	9 15/16	26 11/16	7 1/2 - 9
72	178	181	62 5/16	25 5/8	9 15/16	28 1/8	7 1/2 - 9

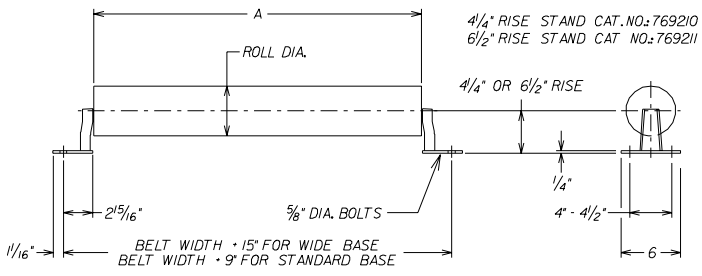


D125203 20 DEG 5 INCH PICKING							
Belt Width	Std. Base	Wide Base	A	B	C	D	E
	Wt.	Wt.					
24	52	61	27 15/16	14 7/8	8 11/16	10 15/16	6 1/4 - 9
30	63	70	33 15/16	20 7/8	8 3/4	11	6 1/4 - 9
36	74	76	39 15/16	26 7/8	9 1/16	11 5/16	6 1/4 - 9
42	82	83	45 15/16	32 7/8	9 1/16	11 5/16	6 1/4 - 9
48	93	94	51 15/16	38 7/8	9 7/16	11 11/16	7 - 9
54	102	105	57 15/16	44 7/8	9 7/16	11 11/16	7 - 9
60	110	113	63 15/16	50 7/8	9 7/16	11 11/16	7 - 9
66	118	132	69 15/16	56 7/8	9 7/16	11 11/16	7 1/2 - 9
72	126	141	75 15/16	62 7/8	9 7/16	11 11/16	7 1/2 - 9

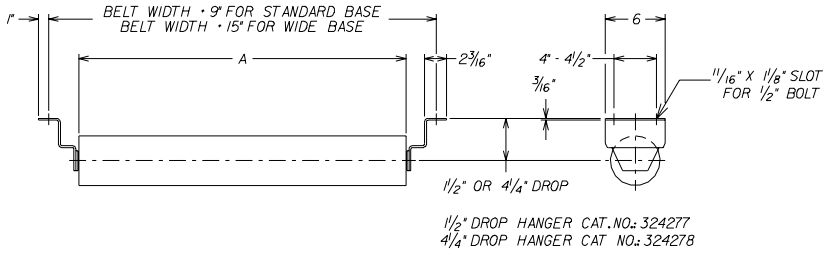


D126203 20 DEG 6 INCH PICKING							
Belt Width	Std. Base	Wide Base	A	B	C	D	E
	Wt.	Wt.					
24	60	69	27 5/8	14 7/8	9 3/16	11 7/16	6 1/4 - 9
30	73	80	33 5/8	20 7/8	9 1/4	11 1/2	6 1/4 - 9
36	85	86	39 5/8	26 7/8	9 9/16	11 13/16	6 1/4 - 9
42	94	96	45 5/8	32 7/8	9 9/16	11 13/16	6 1/4 - 9
48	107	108	51 5/8	38 7/8	9 15/16	12 3/16	7 - 9
54	117	120	57 5/8	44 7/8	9 15/16	12 3/16	7 - 9
60	127	130	63 5/8	50 7/8	9 15/16	12 3/16	7 - 9
66	136	150	69 5/8	56 7/8	9 15/16	12 3/16	7 1/2 - 9
72	145	160	75 5/8	62 7/8	9 15/16	12 3/16	7 1/2 - 9

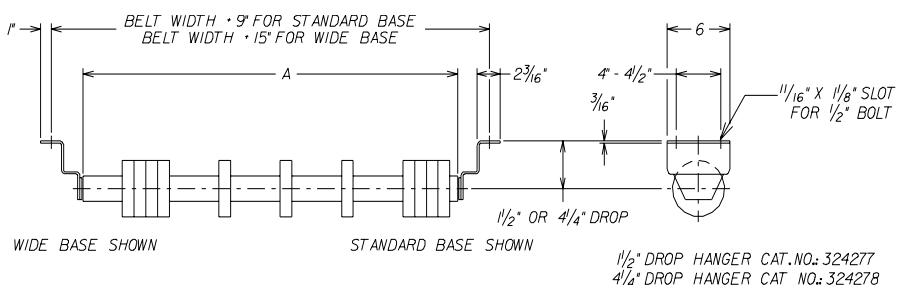
Note: Substitute DSL for D when ordering CEMA D sealed for life idlers.



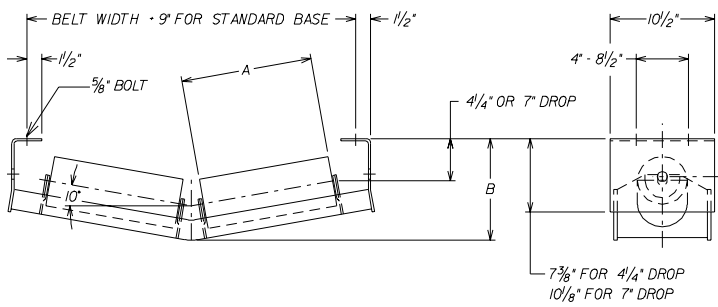
D153 5 INCH FLAT CARRYING			D163 6 INCH FLAT CARRYING		
Belt Width	Std. Base	A	Belt Width	Std. Base	A
	Wt.			Wt.	
24	30	26 7/8	24	36	26 7/8
30	34	32 7/8	30	43	32 7/8
36	39	38 7/8	36	49	38 7/8
42	44	44 7/8	42	55	44 7/8
48	49	50 7/8	48	61	50 7/8
54	54	56 7/8	54	67	56 7/8
60	59	62 7/8	60	73	62 7/8
66	63	68 7/8	66	79	68 7/8
72	68	74 7/8	72	85	74 7/8



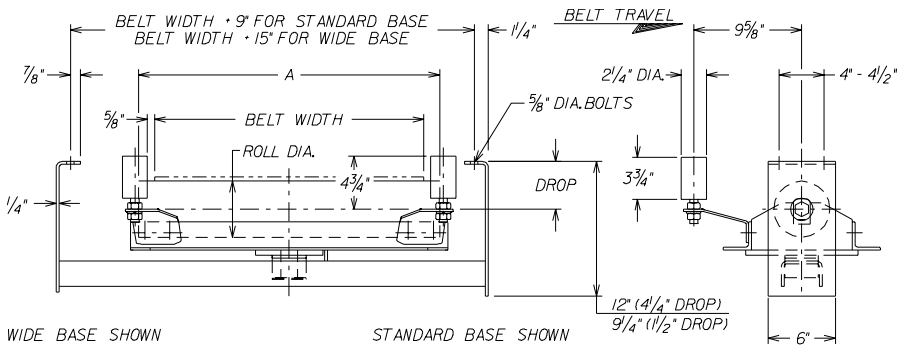
D153 5 INCH FLAT RETURN			D163 6 INCH FLAT RETURN		
Belt Width	Std. Base	A	Belt Width	Std. Base	A
	Wt.			Wt.	
24	29	26 7/8	24	35	26 7/8
30	34	32 7/8	30	42	32 7/8
36	39	38 7/8	36	48	38 7/8
42	44	44 7/8	42	54	44 7/8
48	49	50 7/8	48	61	50 7/8
54	54	56 7/8	54	67	56 7/8
60	59	62 7/8	60	73	62 7/8
66	63	68 7/8	66	79	68 7/8
72	68	74 7/8	72	85	74 7/8



CSL153DM 5 INCH RUBBER DISC RETURN (MASSED ENDS)					CSL163DM 6 INCH RUBBER DISC RETURN (MASSED ENDS)				
Belt Width	Std. Base		Wide Base		Belt Width	Std. Base		Wide Base	
	A	Wt.	A	Wt.		A	Wt.	A	Wt.
24	26 7/8	26	32 7/8	32	24	26 7/8	30	32 7/8	38
30	32 7/8	30	38 7/8	36	30	32 7/8	34	38 7/8	42
36	38 7/8	33	44 7/8	40	36	38 7/8	38	44 7/8	46
42	44 7/8	37	50 7/8	43	42	44 7/8	42	50 7/8	50
48	50 7/8	40	56 7/8	46	48	50 7/8	46	56 7/8	53
54	56 7/8	44	62 7/8	50	54	56 7/8	50	62 7/8	57
60	62 7/8	47	68 7/8	53	60	62 7/8	54	68 7/8	61
66	68 7/8	51	74 7/8	57	66	68 7/8	58	74 7/8	66
72	74 7/8	55	80 7/8	61	72	74 7/8	62	80 7/8	70

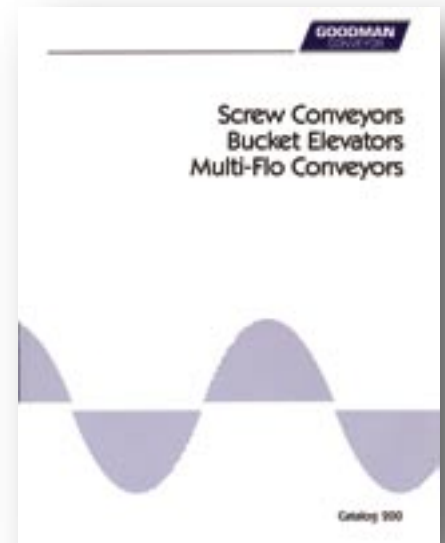
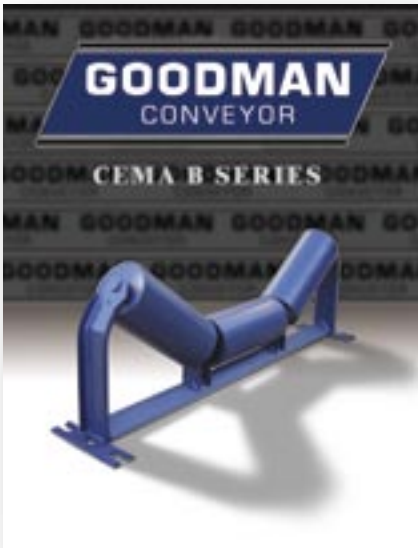


D-25103 5 INCH V-RETURN					D-26103 6 INCH V-RETURN				
Belt Width	Std. Base Wt.	A	4 1/4" Drop	7" Drop	Belt Width	Std. Base Wt.	A	4 1/4" Drop	7" Drop
			B	B				B	B
36	82	19 3/8	11 5/16	14 1/16	36	92	19 3/8	11 5/16	14 1/16
42	90	22 7/8	11 13/16	14 9/16	42	102	22 7/8	11 13/16	14 9/16
48	97	25 5/8	12 5/16	15 1/16	48	109	25 5/8	12 5/16	15 1/16
54	110	29 1/4	12 7/8	15 5/8	54	125	29 1/4	12 7/8	15 5/8
60	118	32 1/4	13 3/8	16 1/8	60	134	32 1/4	13 3/8	16 1/8
66	126	35 1/4	13 15/16	16 11/16	66	143	35 1/4	13 15/16	16 11/16
72	133	38 1/8	14 7/16	17 3/16	72	150	38 1/8	14 7/16	17 3/16



D153T 5 INCH RETURN TRAINING				D163T 6 INCH RETURN TRAINING			
Belt Width	A	Std. Base	Wide Base	Belt Width	A	Std. Base	Wide Base
		Wt.	Wt.			Wt.	Wt.
24	26 7/8	109	112	24	26 7/8	115	118
30	32 7/8	120	124	30	32 7/8	129	132
36	38 7/8	133	136	36	38 7/8	142	145
42	44 7/8	144	147	42	44 7/8	155	158
48	50 7/8	159	162	48	50 7/8	171	174
54	56 7/8	171	174	54	56 7/8	184	188
60	62 7/8	183	187	60	62 7/8	198	201
66	68 7/8	196	199	66	68 7/8	212	215
72	74 7/8	208	211	72	74 7/8	225	228

***Goodman Conveyor offers a complete line of Belt Conveyor Components, Screw Conveyors, Bucket Elevators, and Drag Conveyors***



***Additional Conveyor Components Include:***

- Pulleys
- Impact Beds
- Impact Roller Beds
- Slide Seal Assemblies
- Overland Structure
- Scale Idlers

***For more information see [www.goodmanconveyor.com](http://www.goodmanconveyor.com)***



## **GOODMAN CONVEYOR COMPANY**

P.O. Box 866 / 645 Floyd Wright  
Belton, South Carolina 29627  
(864) 338-7793 / Fax (864) 338-8732  
WEBSITE: [www.goodmanconveyor.com](http://www.goodmanconveyor.com)  
E-MAIL: [good\\_people@GOODMANconveyor.com](mailto:good_people@GOODMANconveyor.com)

Goodman products pictured, described, or listed in this publication are illustrative only. Application and use of these products must be in accordance with applicable codes and regulations and must be arranged and/or provided with covers or other guards where necessary to assure safety of personnel.

Jeffrey Permaseal III™ is a trademark of Goodman Conveyor Company.  
TufKon® is a registered trademark of Goodman Conveyor Company.

©Goodman Conveyor Company  
Catalog subject to change or correction without notice. Use certified prints for construction purposes.  
Bolts, nuts and washers for mounting are not included. Weights shown in pounds and lengths shown in inches.

Printed in U.S.A. Goodman 9/07