

---

---

AEP SURPLUS EQUIPMENT

Copper 4 Conductor 10 AWG Qty 18 Reels

Reel	8	Copper 4 Conductor #10 AWG XHHW2 Direct Bury Insulated Cable Partial Reel
Reel	11	Copper 4 Conductor #10 AWG Insulated Cable Partial Reel
Reel	13	Copper 4 Conductor #10 AWG XHHW2 Direct Bury Insulated Cable Partial Reel
Reel	14	Copper 4 Conductor #10 AWG Insulated Cable Partial Reel
Reel	21	Copper 4 Conductor #10 AWG XHHW2 Direct Bury Insulated Cable Partial Reel
Reel	22	Copper 4 Conductor #10 AWG Insulated Cable Partial Reel
Reel	24	Copper 4 Conductor #10 AWG XHHW2 Direct Bury Insulated Cable Partial Reel
Reel	26	Copper 4 Conductor #10 AWG XHHW2 Direct Bury Insulated Cable Partial Reel
Reel	28	Copper 4 Conductor #10 AWG XHHW2 Insulated Cable Partial Reel
Reel	30	Copper 4 Conductor #10 AWG XHHW2 Insulated Cable Partial Reel
Reel	32	Copper 4 Conductor #10 AWG Insulated Cable Partial Reel
Reel	35	Copper 4 Conductor #10 AWG Insulated Cable Partial Reel
Reel	37	Copper 4 Conductor #10 AWG Insulated Cable Partial Reel
Reel	45	Copper 4 Conductor #10 AWG XHHW2 Insulated Cable Partial Reel
Reel	53	Copper 4 Conductor #10 AWG Insulated Cable Partial Reel
Reel	59	Copper 4 Conductor #10 AWG Insulated Cable Partial Reel
Reel	61	Copper 4 Conductor #10 AWG Insulated Cable Partial Reel
Reel	63	Copper 4 Conductor #10 AWG Insulated Cable Partial Reel

Qty: 1 lot (includes 18 partial reels)

Location: This item is located near Columbus, OH

Condition: Surplus

Description: No known concerns. Actual lengths and weights are unknown. See attachment for more photos.





Draka

Draka Cables, Ltd.

From

1 Tamaqua Blvd.

SCHUYLKILL HAVEN PA 17972

USA

Ph: 717-381-4281

To

CANTEN CDC - AEP

AEP PO# 250027321491799

5300 NAVARRE RD S.W.

CANTON OH 44706

UNITED STATES OF AMERICA

8



**Draka**

Draka Cableteq | USA

From

1 Tamaqua Blvd.

SCHUYLKILL HAVEN PA 17972

USA

Ph# 570 -- 385 -- 4381

88

To

CANTEN CDC - AEP

AEP PO#250027321491799

5300 NAVARRE RD S.W.

CANTON OH 44706

UNITED STATES OF AMERICA



DRAKA PA 4/C #10 AWG COPPER XLPE/CPE XHHW-2 TYPE TC 600V (UL) E60544 SHIELDED OIL RES II SUN RES DIR BUR COLOR CODE E-2 2016 REP SPEC SS-080001 CID #050007410

DRAKA PA 4/C #10 AWG COPPER XLPE/CPE XHHW-2 TYPE TC 600V (UL) E60544 SHIELDED OIL RES II SUN RES DIR BUR COLOR CODE E-2 2016 REP SPEC SS-080001 CID #050007410

DRAKA PA 4/C #10 AWG COPPER XLPE/CPE XHHW-2 TYPE TC 600V (UL) E60544 SHIELDED OIL RES II SUN RES DIR BUR COLOR CODE E-2 2016 REP SPEC SS-080001 CID #050007410

DRAKA PA 4/C #10 AWG COPPER XLPE/CPE XHHW-2 TYPE TC 600V (UL) E60544 SHIELDED OIL RES II SUN RES DIR BUR COLOR CODE E-2 2016 REP SPEC SS-080001 CID #050007410

DRAKA PA 4/C #10 AWG COPPER XLPE/CPE XHHW-2 TYPE TC 600V (UL) E60544 SHIELDED OIL RES II SUN RES DIR BUR COLOR CODE E-2 2016 REP SPEC SS-080001 CID #050007410

DRAKA PA 4/C #10 AWG COPPER XLPE/CPE XHHW-2 TYPE TC 600V (UL) E60544 SHIELDED OIL RES II SUN RES DIR BUR COLOR CODE E-2 2016 REP SPEC SS-080001 CID #050007410

DRAKA PA 4/C #10 AWG COPPER XLPE/CPE XHHW-2 TYPE TC 600V (UL) E60544 SHIELDED OIL RES II SUN RES DIR BUR COLOR CODE E-2 2016 REP SPEC SS-080001 CID #050007410



DRAKA PA 4/C #10 AWG COPPER XLPE/CPE XHHW-2 TYPE TC 600V (UL) E60544 SHIELDED OIL RES II SUN RES DIR BUR COLOR

DRAKA PA 4/C #10 AWG COPPER XLPE/CPE XHHW-2 TYPE TC 600V (UL) E60544 SHIELDED OIL RES II SUN RES DIR BUR COLOR

COPPER XLPE/CPE XHHW-2 TYPE TC 600V (UL) E60544 SHIELDED OIL RES II SUN RES DIR BUR COLOR CODE E-2 2016 REP SPEC

TYPE TC 600V (UL) E60544 SHIELDED OIL RES II SUN RES DIR BUR COLOR CODE E-2 2016 REP SPEC

DRAKA PA 4/C #10 AWG COPPER XLPE/CPE XHHW-2 TYPE TC 600V (UL) E60544 SHIELDED OIL RES II SUN RES DIR BUR COLOR CODE E-2 2016 REP SPEC SS-080001 CID #0500074410

SHIELDED OIL RES II SUN RES DIR BUR COLOR CODE E-2 2016 REP SPEC SS-080001 CID #0500074410

CODE E-2 2016 REP SPEC SS-080001 CID #0500074410 005320 FT





ALLNIRE 104 FE/PVC/PVC 600V SHIELDED #0055493051 03/28/16 000001902FT

ALLWIRE 10/4 PE/PVC/PVC 600V SHIELDED #0055493051 03/28/16 000001903FT







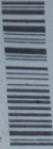


ISO 9001 Registered

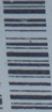
Draka Cableteq USA

PO # 7670 - 430J56

Batch # 0001107296



Material # 382825



4/10 XLP/CPE O/S TYPE TC AEP500.74410

Quantity # 2,550 FT



Length Markings: Top: 2,550 Bottom: 5,100

TYPE TOLER: 4/C #10 AWG (5.26 mm2) MIN. (LPE SHLD'D CPE JKT  
600 VOLTS

AEP P/N 500074410



Delivery # 80086459 / 900008

04/17/2014

ISO 9001 Registered

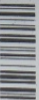
**Draka Cableteq USA**

PO # 2503452950565

Batch # 0000932099



Material # 345271



4/10 PE/PVC/PVC 20 - 10 O/S AEP55493051

PO LINE  
0055493051

Quantity # 2,530 FT



Length Markings:

Top: 1.772

Bottom: 10.300

CONTROL CABLE: 4/C #10 AWG (5.26 mm<sup>2</sup>) PE - PVC 20 - 10 +  
#18 AWG (0.92 mm<sup>2</sup>), TC DRAIN CU SHIELD PVC JACKET 75C  
600 VO, IS

CC: BLACK, WHITE, RED, GREEN

AEP P/N: 0055493051











Length Markings:

Top: 2

Bottom: 2.596

TYPE TC-ER: 4/C #10 AWG (5.26 mm<sup>2</sup>) MCXLPE SHLD'D CPE JKT.  
600 VOLTS

ASP P/N 500074410



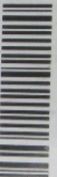




# Draka Cableteq USA

P0 # 7670-497392

Batch # 0001150000



Material # 382825



4/10 XLP/CPE O/S TYPE TC AEP500074410

Quantity # 2,500 FT



Length Markings: Top: 5.042 Bottom: 7.664

TYPE TC - ER: 4/C #10 AWG (6.26 mm<sup>2</sup>) MCXLP SHLD'D CPE JKT  
600 VOLTS

AEP P/N 500074410



RES DIR BAR COLOR CODE F-2 2015 REP SPEC SS-000001 CID K05000764410

000194 FT

ONE 1044U-2 TYPE TC 600V (UL) E60544 SHIELDED OIL RES II SUN RES DIR BAR COLOR CODE F-2 2015 REP SPEC SS-000001 CID K05000764410

DRAWN PA 4-C #10 RUB COPPER XLPE/CPE 1044U-2 TYPE TC 600V (UL) E60544 SHIELDED OIL RES II

000194 FT

BAR COLOR CODE F-2 2015 REP SPEC SS-000001 CID K05000764410

000008 FT

DRAWN PA 4-C #10 RUB COPPER XLPE/CPE 1044U-2 TYPE TC 600V (UL) E60544 SHIELDED OIL RES II SUN RES DIR BAR COLOR CODE F-2 2015 REP SPEC SS-000001 CID K05000764410

000008 FT

RES DIR BAR COLOR CODE F-2 2015 REP SPEC SS-000001 CID K05000764410

000008 FT

ONE 1044U-2 TYPE TC 600V (UL) E60544 SHIELDED OIL RES II SUN RES DIR BAR COLOR CODE F-2 2015 REP SPEC SS-000001 CID K05000764410

000008 FT



Delivery # 80121283 / 900007

09/15/2015

ISO 9001 Registered

**Draka Cableteq USA**

P0 # 7670 - 497392

Batch # 0001149440



Material # 382825



4/10 XLP/CPE O/S TYPE TC AEP500074410

Quantity # 2,525 FT



Length Markings

Top: 2 5/4

Bottom: 0

TYPE TC - ER 4/0 #10 AWG (5.26 mm2) MCXLP E SHLD'D CPE JKT  
6000 VOLT S

SEWU PA 4/C #10 AWG COPPER XLPE/CPE XHHW-2 TYPE TC 600V (UL) E60544 BULIDUM 001

SEWU PA 4/C #10 AWG COPPER XLPE/CPE XHHW-2 TYPE TC 600V (UL) E60544 BULIDUM 001



4/24/14 12:00 PM 1000-3 CORE SHIELDED  
SOUTH WIRE SPEC 12-00001 000070010

12/12/2014 BUYHT 012002

SOUTHWIRE CUL3 10 AWG CU 4/C

FRANKLIN ELECTRIC 1000-3 CORE SHIELDED TYPE TC CPE JACKET  
SOUTH WIRE SPEC 12-00001 000070010 12/12/2014 BUYHT 012002

FRANKLIN ELECTRIC 1000-3 CORE SHIELDED TYPE TC CPE JACKET  
SOUTH WIRE SPEC 12-00001 000070010

FRANKLIN ELECTRIC 1000-3 CORE SHIELDED TYPE TC CPE JACKET  
SOUTH WIRE SPEC 12-00001 000070010 12/12/2014 BUYHT 012002









Southwire

AWG

10-7

SUBSTATION WIRING / COPPER / BLACK  
4/C FRXLP E2 LCSHD CPE SUBST



LISTED

POWER AND CONTROL TRAY CABLE TYPE TC  
ISSUE NO. 0010000 E75755

FOOTAGE

2450

CROSS

854

TARE

83

NET

271

PACKAGE

N24

11/18/14

HUB SEQ 1 # 2  
TOP SEQ 0 # 2452

DATE

IN US



60-08-55-01

QUALITY BY GRIZZARD

TAG. 125058

FAULKNER NC 60085501-662900202600-125058 SN: 000000

ACTIVITY CLASS



10' x 14'



E-2 2013 REP SPEC SS-080001 CID #0055493050 DRWR PR 4/C #10 RWB COPPER 20/10 PE/PVC 600V SHIELDED COLOR CODE E-2 2013 REP SPEC SS-080001 CID #0055493050

E-2 2013 REP SPEC SS-080001 CID #0055493050 DRWR PR 4/C #10 RWB COPPER 20/10 PE/PVC 600V SHIELDED COLOR CODE E-2 2013 REP SPEC SS-080001 CID #0055493050

E-2 2013 REP SPEC SS-080001 CID #0055493050 DRWR PR 4/C #10 RWB COPPER 20/10 PE/PVC 600V SHIELDED COLOR CODE E-2 2013 REP SPEC SS-080001 CID #0055493050 010132 FT

E-2 2013 REP SPEC SS-080001 CID #0055493050 DRWR PR 4/C #10 RWB COPPER 20/10 PE/PVC 600V SHIELDED COLOR CODE E-2 2013 REP SPEC SS-080001 CID #0055493050

E-2 2013 REP SPEC SS-080001 CID #0055493050 DRWR PR 4/C #10 RWB COPPER 20/10 PE/PVC 600V SHIELDED COLOR CODE E-2 2013 REP SPEC SS-080001 CID #0055493050

E-2 2013 REP SPEC SS-080001 CID #0055493050 DRWR PR 4/C #10 RWB COPPER 20/10 PE/PVC 600V SHIELDED COLOR CODE E-2 2013 REP SPEC SS-080001 CID #0055493050

E-2 2013 REP SPEC SS-080001 CID #0055493050 DRWR PR 4/C #10 RWB COPPER 20/10 PE/PVC 600V SHIELDED COLOR CODE E-2 2013 REP SPEC SS-080001 CID #0055493050 010132 FT

E-2 2013 REP SPEC SS-080001 CID #0055493050 DRWR PR 4/C #10 RWB COPPER 20/10 PE/PVC 600V SHIELDED COLOR CODE E-2 2013 REP SPEC SS-080001 CID #0055493050



...TER 20/10T PE/PLC  
10 RUB COPPER 20/10T PE/PLC  
E-2 2013 REP SPEC SS-080001 CID #005549





000042

08/23/2013

P0 # 2503452950463

Batch # 0000837182



Material # 345270



4/10 PE/PVC/PVC 20 - 10 O/S AEP55493050

PO LINE 0002  
0055493050

Quantity # 2,550 FT



Length Markings:

Top: 7.656

Bottom: 10.212

CONTROL CABLE: 4/C #10 AWG (5.26 mm<sup>2</sup>) PE - PVC 20 - 10 +  
#18 AWG (0.82 mm<sup>2</sup>) TC DRAIN CU SHIELD PVC JACKET 75C  
500 VO.1S

CC: BLACK, RED, BLUE, ORANGE

AEP P/N: 55193050





11-20

PRISE ELECTRIC CO. 10 RWG 4C K1 PE/PVC 20-10 CONTROL CABLE 600V COPPER TYPE SHIELD (2014) REF SPEC 50-00003 REF N.E.E. 00000000

PRISE ELECTRIC CO. 10 RWG 4C K1 PE/PVC 20-10 CONTROL CABLE 600V COPPER TYPE SHIELD (2014) REF SPEC 50-00003 REF N.E.E. 00000000

PRISE ELECTRIC CO. 10 RWG 4C K1 PE/PVC 20-10 CONTROL CABLE 600V COPPER TYPE SHIELD (2014) REF SPEC 50-00003 REF N.E.E. 00000000

PRISE ELECTRIC CO. 10 RWG 4C K1 PE/PVC 20-10 CONTROL CABLE 600V COPPER TYPE SHIELD (2014) REF SPEC 50-00003 REF N.E.E. 00000000

PRISE ELECTRIC CO. 10 RWG 4C K1 PE/PVC 20-10 CONTROL CABLE 600V COPPER TYPE SHIELD (2014) REF SPEC 50-00003 REF N.E.E. 00000000



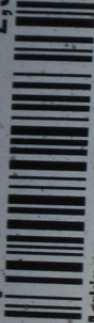




DRWA PR 4/C #10 RUS COPPER XLPE/CPE 3MM-2 TYPE TC 600V (UL) E40544 SHIELDED  
SPEC 55-080001 CID #0500074410 001704 FT

**Quantity #**

**2,515 FT**



**Length Markings:**

**Top:2.515**

**Bottom:0**

**TYPE TC-ER: 4/C #10 AWG (5.26 mm2) MCXLPE SHLD:D CPE JKT  
600 VOLTS**

**AEP P/N 500074410**





Quantity #

2,230 FT



Length Markings:

Top:2,224

Bottom:2

CONTROL CABLE: 4/C #10 AWG (5.26 mm<sup>2</sup>) PE - PVC 20 - 10 +  
#18 AWG (0.82 mm<sup>2</sup>) TC DRAIN CU SHIELD PVC JACKET 75C  
600 VOLTS

CC: BLACK, WHITE, RED, GREEN

AEP P/N: 005549305

UNIVERSITY OF CALIFORNIA  
SANTA BARBARA







SOUTHAIRE S 10 AWG CU 4/C PE/PVC CPFC UNTERFED PVC JKT 600V 2/17/14 --- REP SPEC. SS-080001 --- 0055493050 QS/TS 000002





62

10.5

Delivery # 80107990 / 900025

02/07/2015

ISO 9001 Registered

**Draka Cableteq USA**

PO # 7670 - 369036

Batch # 0001058760



Material # 382826



7/10 XLP/CPE 0/S TYPE TC AEP500074415

Quantity #

1,575 FT



Length Markings:

Top: 546 Bottom: 2,156

TYPE TC - ER: 7/10 FIBER (5.26 mm2) MCXLPE SHLD'D CPE JKT  
600 VO-IS

AEP P/N 500074415





